

5219 M.E.B. and 5219 M.E.B. S.I.D.



Here is the largest single-door SAFE-CABINET carrying the Medium Exposure "B" label. It has been designed particularly as an excellent general-purpose unit to fit the diversified requirements of the business executive or the store or general office of moderate size. It has a relatively large capacity, 11.73 cu. ft., considering the small amount of floor space occupied. A variety of Interior Equipment can be changed or rearranged to fit practically any filing need. S.I.D. model is equipped with single slide-in door.

INTERIOR EQUIPMENT — For SAFE-CABINET adjustable Interior Equipment to fit this unit, see pages 88 and 89.

SPECIFICATIONS

Catalog Number	Dimensions, Inches						Door Swing Radius		Cubic Capacity, Feet	Weights, Lbs.	
	Inside			Outside Overall (including hardware)							
	Wide	High	Deep	Wide	High	Deep	Right	Left		Net	Crated
5219 M.E.B.	20	52	19½	30-11/32	65¾	30-3/16	28-1/16	—	11.73	1400	1550
5219 M.E.B. S.I.D.	20	52	19½	37-13/32	66-7/16	30½	30-5/16	—	11.73	1650	1900

3119 M.E.B. S.I.D.

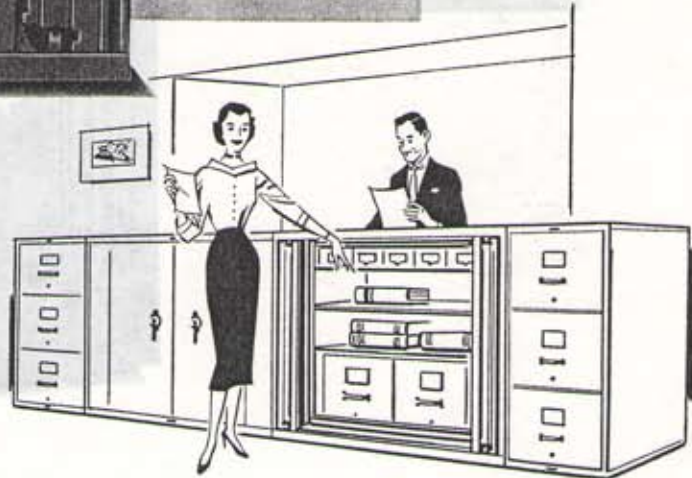
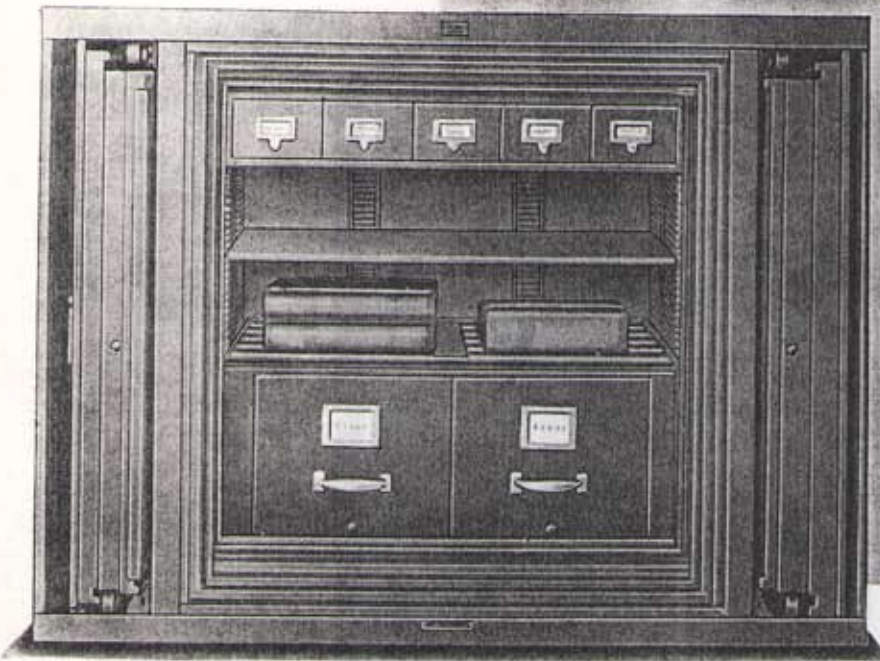
section

9

2-hour

SAFE-

CABINET



This SAFE-CABINET is available only with slide-in doors. It is popular in small offices as its top may also serve as a counter. Large offices use it too, however, because it is a "space-saver".

With the casters removed, it is designed to intermember with 3-drawer, counter-height SAFE-FILE or with uninsulated ARISTOCRAT III or KOMPAKT IV filing cabinets. Fillers are available to adjust for difference in overall depth when intermembered with these units. A continuous linoleum top can be furnished for such an installation to further its service as a counter.

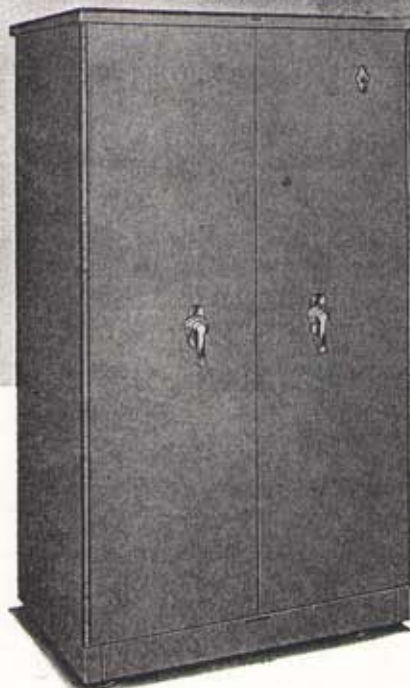
INTERIOR EQUIPMENT — For SAFE-CABINET adjustable Interior Equipment to fit this unit, see pages 84 and 85.

SPECIFICATIONS

Catalog Number	Dimensions, Inches						Door Swing Radius		Cubic Capacity, Feet	Weights, Lbs.	
	Inside			Outside Overall (including hardware)							
	Wide	High	Deep	Wide	High	Deep	Right	Left		Net	Crated
3119 M.E.B. S.I.D.	30	30 3/4	19 1/2	54-5/16	*40-11/16	31-3/32	23-17/32	28-3/32	10.28	1600	1800

*Without Casters.

6019 M.E.B. and 6019 M.E.B. S.I.D.



This SAFE-CABINET unit is slightly smaller in width and depth than the 6020 M.E.B. but still has a cubic foot capacity of 20.31. It is particularly suited to the housing of records requiring standard letter size filing drawers or document or card index drawers. Interior equipment is available, however, for a wide variety of arrangements in-

cluding different shelves, vertical partitions, check files, letter or legal file drawers, etc. S.I.D. model is equipped with slide-in doors.

INTERIOR EQUIPMENT—For adjustable Interior Equipment to fit this SAFE-CABINET, see pages 84 and 85.

SPECIFICATIONS

Catalog Number	Dimensions, Inches						Door Swing Radius		Cubic Capacity, Feet	Weights, Lbs.	
	Inside			Outside Overall (including hardware)							
	Wide	High	Deep	Wide	High	Deep	Right	Left		Net	Crated
6019 M.E.B.	30	60	19½	39½	73¾	30-3/16	19-5/16	24-9/16	20.31	1825	2050
6019 M.E.B. S.I.D.	30	60	19½	54-5/16	74-7/16	30½	23-17/32	28-3/32	20.31	2275	2625

3120 M.E.B. and 3120 M.E.B. S.I.D.

section

g

2-hour
SAFE-
CABINET



This is a low and wide SAFE-CABINET just a few inches higher than counter height. It is ideal for housing and protecting books having large size sheets and ledgers which may be arranged "three across". Two legal size drawers also can be accommodated side-by-side.

This Safe can fit conveniently in most locations in

an office. Its low height does not interfere with visibility or obstruct light, and the top can be used as working space or for standing reference. S.I.D. model is equipped with slide-in doors.

INTERIOR EQUIPMENT—For adjustable Interior Equipment to fit this SAFE-CABINET, see page 87.

SPECIFICATIONS

Catalog Number	Dimensions, Inches						Door Swing Radius		Cubic Capacity, Feet	Weights, Lbs.	
	Inside			Outside Overall (including hardware)							
	Wide	High	Deep	Wide	High	Deep	Right	Left		Net	Crated
120 M.E.B.	36-1/16	31	20½	45-9/16	44¾	31-3/16	22-11/32	27-19/32	13.26	1450	1625
120 M.E.B. S.I.D.	36-1/16	31	20½	60¾	45-7/16	31½	26-9/16	31⅛	13.26	1700	2000

6020 M.E.B. and 6020 M.E.B. S.I.D.

section

g

2-hour
SAFE-
CABINET



This is an extremely popular "general purpose" model with a 25.66 cu. ft. capacity. It is used by many Attorneys, Banks, Insurance Companies, Public Utilities and similar businesses because it meets the need for legal documents, contracts, policies and other legal size papers.

This SAFE-CABINET takes 2 legal size drawers side-by-side and can house 3 ledger trays placed on roller shelves. This unit is one of our widest models, but its shorter depth allows it to be moved through ordinary office doors with ease. S.I.D. model is equipped with slide-in doors.

INTERIOR EQUIPMENT — For adjustable Interior Equipment to fit this SAFE-CABINET, see page 87.

SPECIFICATIONS

Catalog Number	Dimensions, Inches						Door Swing Radius		Cubic Capacity, Feet	Weights, Lbs.	
	Inside			Outside Overall (including hardware)							
	Wide	High	Deep	Wide	High	Deep	Right	Left			
6020 M.E.B.	36-1/16	60	20 1/2	45-9/16	73 3/4	31-3/16	22-11/32	27-19/32	25.66	2100	2400
6020 M.E.B. S.I.D.	36-1/16	60	20 1/2	60 3/4	74-7/16	31 1/2	26-9/16	31-1/8	25.66	2560	2950

6025 M.E.B. and 6025 M.E.B. S.I.D.



This is an excellent, all-purpose SAFE-CABINET that has an overall capacity of 26.56 cu. ft. Its inside depth of 25½" enables it to house Standard KARDEX Cabinets. In addition, however, its utilitarian size gives the 6025 a versatility of filing arrangement that can be used to great advantage by most general business or professional offices requiring Medium Exposure fire protection.

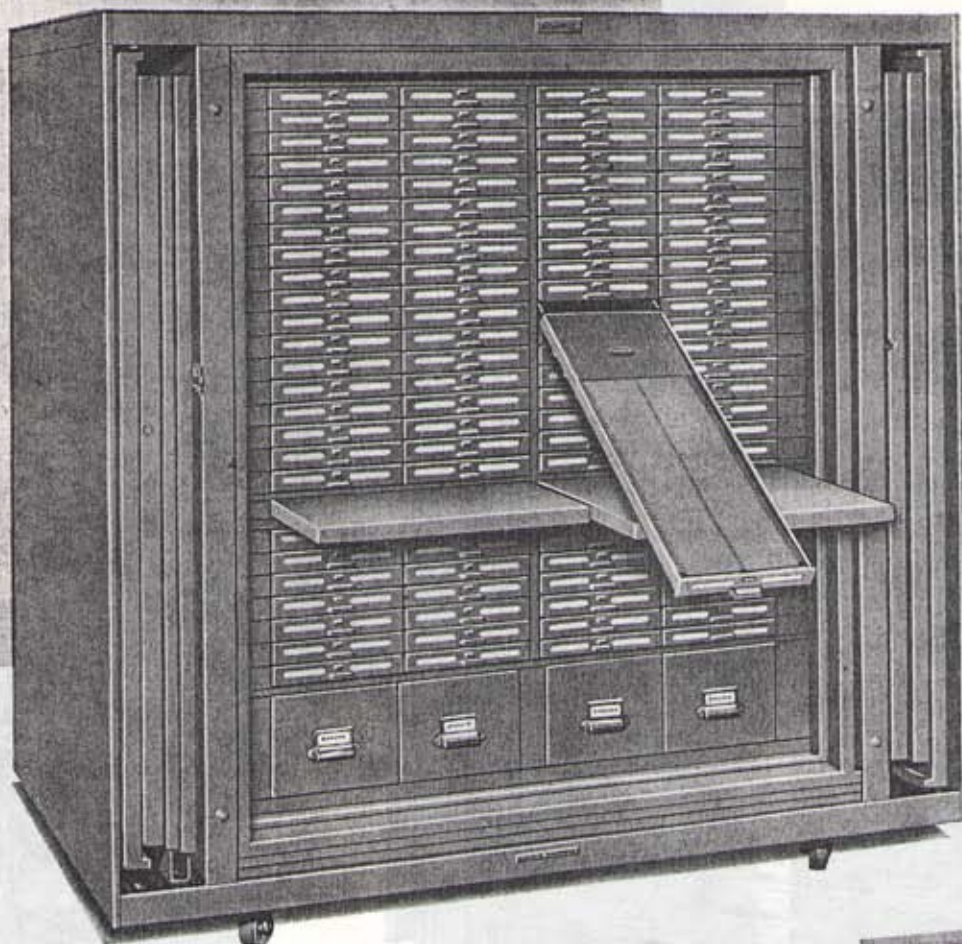
Like every SAFE-CABINET, it is available with a variety of interior arrangements for the filing of practically any type of record. Various combinations of shelves, partitions, drawers or lockers, can be rearranged or substituted for changing requirements. S.I.D. model is equipped with slide-in doors.

INTERIOR EQUIPMENT — For adjustable Interior Equipment to fit this SAFE-CABINET, see pages 86 and 93.

SPECIFICATIONS

Catalog Number	Dimensions, Inches						Door Swing Radius		Cubic Capacity, Feet	Weights, Lbs.	
	Inside			Outside Overall (including hardware)							
	Wide	High	Deep	Wide	High	Deep	Right	Left			
6025 M.E.B.	30	60	25½	39½	73¾	36-3/16	19-5/16	24-9/16	26.56	2050	2300
6025 M.E.B. S.I.D.	30	60	25½	54-5/16	74-7/16	36½	23-17/32	28-3/32	26.56	2500	2900

5230 M.E.B. and 5230 M.E.B. S.I.D.



This model has the greatest inside depth, 30½", of any SAFE-CABINET. It is most practical for housing extra deep KARDEX cabinets and KARDEX interiors made especially for this safe.

Interior Equipment also is available to handle the usual files and records of normal business operations. These include various combinations of card, check, letter or storage drawers, document files, shelves and partitions — even map and plan drawer units. Vertical card ledger trays and KOLECT-A-MATIC ledger trays also can be housed.

The 30½" depth of this safe also accommodates 4-drawer ARISTOCRAT or 5-drawer KOMPAKT files if such certified 2-hour protection is desired.



INTERIOR EQUIPMENT — For adjustable Interior Equipment to fit this SAFE-CABINET, see pages 90, 91 and 92.

SPECIFICATIONS

Catalog Number	Dimensions, Inches						Door Swing Radius		Cubic Capacity, Feet	Weights, Lbs.	
	Inside			Outside Overall (including hardware)							
	Wide	High	Deep	Wide	High	Deep	Right	Left			
5230 MEB	42-3/16	52	30½	51-11/16	65½	41-3/16	25-13/32	30-21/32	38.72	2625	2925
5230 MEB SID	42-3/16	52	30½	66½	66-7/16	41½	29¾	34-3/16	38.72	2900	3350

6028 M.E.B. and 6028 M.E.B. S.I.D.

section

g

2-hour
SAFE-
CABINET



This SAFE-CABINET is excellent for housing standard KARDEX Visible Interiors, Cabinets or many other types of records. It is also designed to hold the Map and Plan units described on pages 48 and 49 and provide 2-hour fire protection for valuable drawings, tracings, blueprints, etc.

This 6028 M.E.B. has the huge capacity of 41.75 cu. ft.—practically that of a small vault! Yet, be-

cause of its movability, it may be placed almost anywhere in the office. It thus combines working convenience with Medium Exposure safety for valuable records at point of use. S.I.D. model is equipped with slide-in doors.

INTERIOR EQUIPMENT—For adjustable Interior Equipment to fit this SAFE-CABINET, see pages 90, 91 and 93.

SPECIFICATIONS

Catalog Number	Dimensions, Inches						Door Swing Radius		Cubic Capacity, Feet	Weights, Lbs.	
	Inside			Outside Overall (including hardware)							
	Wide	High	Deep	Wide	High	Deep	Right	Left		Net	Crated
6028 M.E.B.	42-3/16	60	28½	51-11/16	73¾	39-3/16	25-13/32	30-21/32	41.75	2625	2925
6028 M.E.B. S.I.D.	42-3/16	60	28½	66½	74-7/16	39½	29¾	34-3/16	41.75	3075	3550

5219 S.E.A. and 5219 S.E.A. S.I.D.

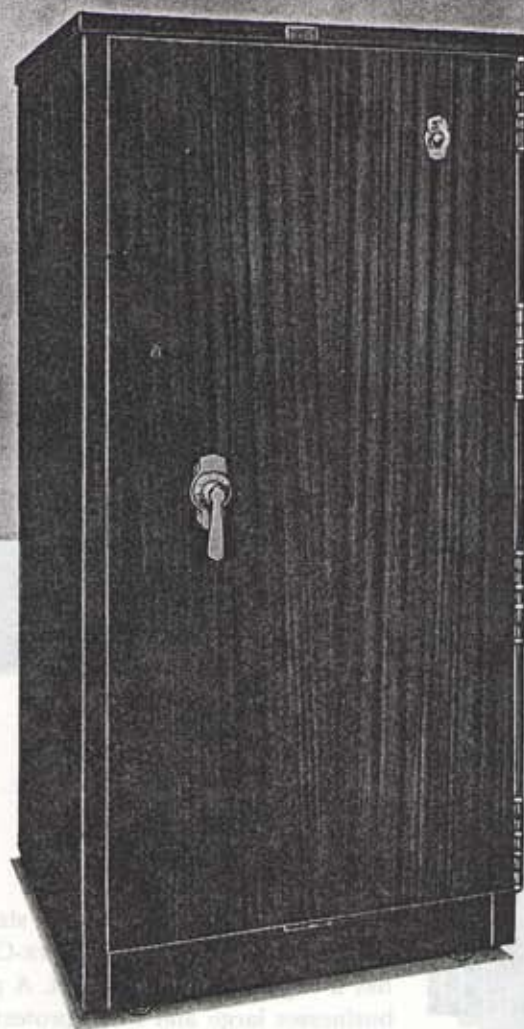


Illustration shows mahogany grained finish. For color sample and additional information on finishes, see page 82.



Here is the only single door SAFE-CABINET in the entire line that bears the 4-Hour label. It is of medium size with an ample 11.73 cu. ft. capacity and is one of our most popular models. Providing the utmost in fire protection at a nominal cost, this Safe is ideal for an executive office or for general

use by a business of moderate size. Door opens to the right. S.I.D. model of this SAFE-CABINET is equipped with slide-in door.

INTERIOR EQUIPMENT—For adjustable Interior Equipment to fit this SAFE-CABINET, see pages 88 and 89.

SPECIFICATIONS

Catalog Number	Dimensions, Inches						Door Swing Radius		Cubic Capacity, Feet	Weights, Lbs.	
	Inside			Outside Overall (including hardware)							
	Wide	High	Deep	Wide	High	Deep	Right	Left		Net	Crated
5219 SEA	20	52	19½	32-5/32	67¾	32-5/16	29¾	—	11.73	1850	2100
5219 SEA SID	20	52	19½	40-7/32	68-7/16	32¾	35-3/32	—	11.73	2075	2275

6019 S.E.A. and 6019 S.E.A. S.I.D.

section

f

4-hour
SAFE-
CABINET



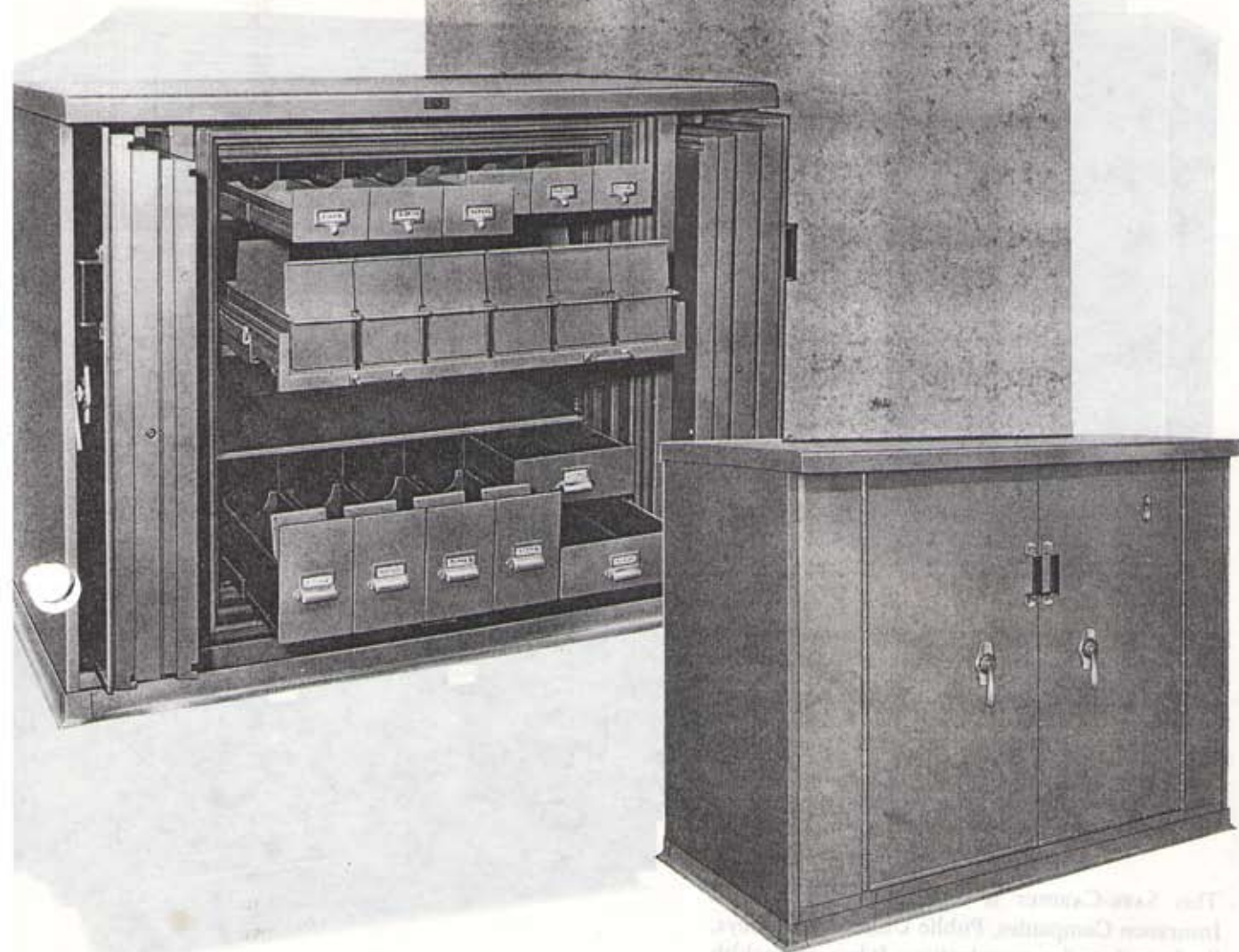
Illustration shows No. 6019 S.E.A. in both open and closed view. S.I.D. model is equipped with slide-in doors.

This is one of the most popular size safes for general use in the extensive SAFE-CABINET line. It has a capacity of 20.31 cu. ft. A great variety of businesses large and small protect their most indispensable records against the most severe fire conditions in this No. 6019 S.E.A. It is particularly adaptable for housing records in standard letter size, document or card index filing drawers.

INTERIOR EQUIPMENT—For adjustable Interior Equipment to fit this SAFE-CABINET, see pages 84 and 85.

SPECIFICATIONS

Catalog Number	Dimensions, Inches						Door Swing Radius		Cubic Capacity, Feet	Weights, Lbs.	
	Inside			Outside Overall (including hardware)							
	Wide	High	Deep	Wide	High	Deep	Right	Left		Net	Crated
6019 SEA	30	60	19½	41¾	75½	32-5/16	20-7/16	26	20.31	2450	2700
6019 SEA SID	30	60	19½	58-9/16	76-7/16	32¾	25-21/32	30-11/16	20.31	2925	3300

3720 S.E.A. S.I.D.

This SAFE-CABINET is similar to the #3729 S.E.A. S.I.D. except in size. It is not as wide or as deep and has a smaller capacity of 15.83 cu. ft. It does, however, provide the same 4-hour protection and has the same convenience features.

Savings banks, building and loan associations, personal loan companies and insurance companies find their records are more efficiently maintained and permanently protected in Low Height SAFE-CABINET Ledger

Desk, either the 3729 or the 3720 S.E.A. S.I.D. Fluorescent lights and reflector are built in behind a 3" extension at the front of the top of the safe. This model is available only with slide-in doors.

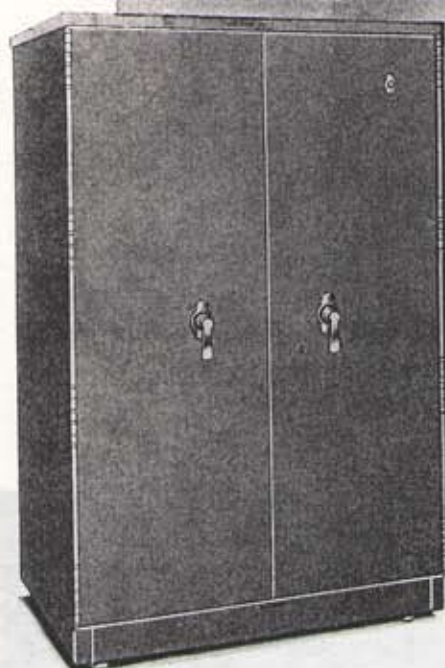
INTERIOR EQUIPMENT—As illustrated. Top section is for 5x3" cards. 5x8" or 6x8" trays can be accommodated in open-front drawer in center section. Ledger Card Section is for cards 6x8½" or 5x8½". Standard adjustable Interior Equipment also available, see page 87.

SPECIFICATIONS

Catalog Number	Dimensions, Inches						Door Swing Radius		Cubic Capacity, Feet	Weights, Lbs.	
	Inside			Outside Overall (including hardware)							
	Wide	High	Deep	Wide	High	Deep	Right	Left		Net	Crated
3720 SEA SID	36-1/16	37	20 1/2	64 3/4	*51	35-5/16	28-11/16	33-23/32	15.83	2780	3350

*Without casters

6020 S.E.A. and 6020 S.E.A. S.I.D.



This SAFE-CABINET is especially popular with Insurance Companies, Public Utilities, Attorneys, Banks and similar organizations. It has extra width so is particularly adaptable for housing legal size documents, contracts, policies and other papers. The spacious 25.66 cu. ft. capacity provides maximum fire protection for these important records.

INTERIOR EQUIPMENT—For adjustable Interior Equipment to fit this SAFE-CABINET, see page 87.

Illustration shows typical interior arrangement with two legal drawers side by side at the bottom, document drawers at the top and card drawers and two roller shelves in the center. S.I.D. model is equipped with slide-in doors.

SPECIFICATIONS

Catalog Number	Dimensions, Inches						Door Swing Radius		Cubic Capacity, Feet	Weight Lbs.	
	Inside			Outside Overall (including hardware)							
	Wide	High	Deep	Wide	High	Deep	Right	Left			
6020 SEA	36-1/16	60	20½	47-13/16	75½	33-5/16	23-15/32	29-1/32	25.66	2600	2900
6020 SEA SID	36-1/16	60	20½	64¾	76-7/16	33¾	28-11/16	33-23/32	25.66	3250	3650

3729 S.E.A. S.I.D.

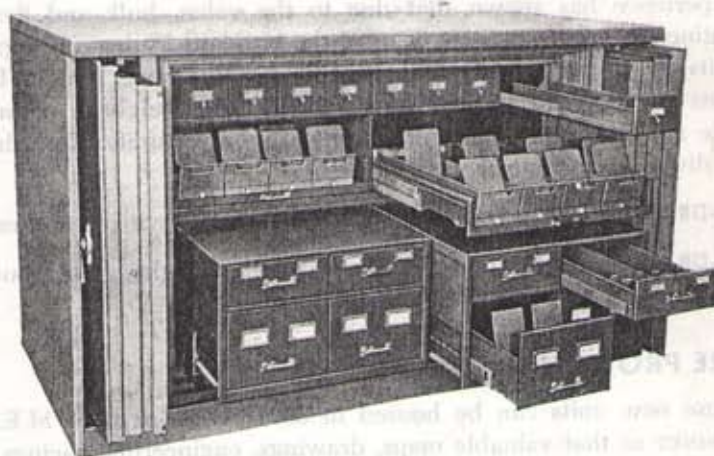


This Low Height SAFE-CABINET Ledger Desk provides the maximum in protection and convenience for Installment Accounting Records.

It is available only with slide-in doors. Fluorescent lights and reflector are built in behind a 3" extension at the front of the top.

Its giant 36.75 cu. ft. capacity provides housing for an almost unbelievable number of Savings Ledgers and Signature Cards. Active accounts are given accessibility in upper drawers or on a sliding tray or shelf. Inactive accounts may be locked in the lower drawers. Additional provisions may be made for current withdrawal and deposit tickets and for journal sheets.

INTERIOR EQUIPMENT—As illustrated, available with either 8 6x4" drawers at top or 5 double-compartment 5x3" drawers. Sliding Ledger Desk Section in center is available with open-front drawers for either



5x8" or 6x8" trays. Sections at bottom can be equipped to house either 2 double-compartment 5x3" drawers and 2 double-compartment 5x8" drawers or 2 double compartment 6x4" drawers and 2 double compartment 6x8" drawers.

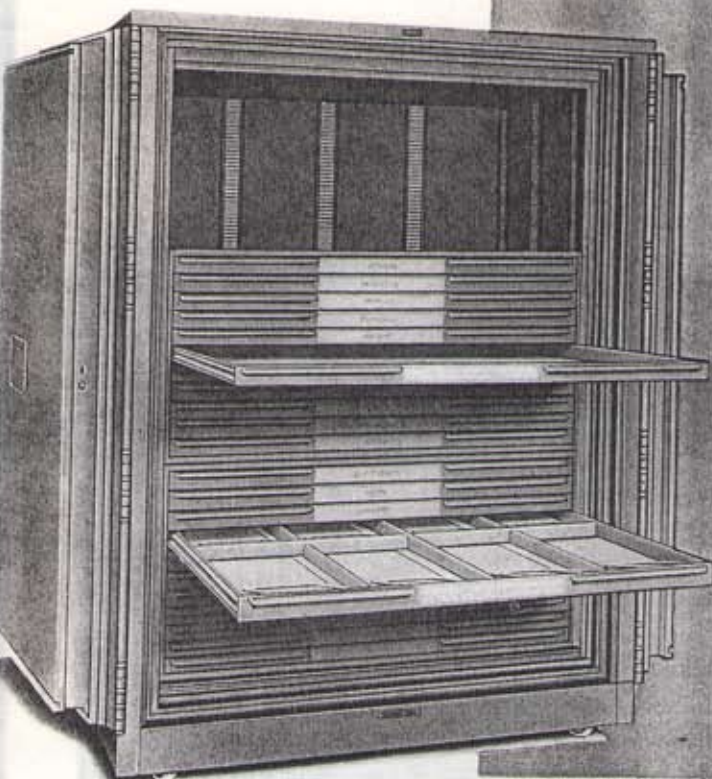
SPECIFICATIONS

Catalog Number	Dimensions, Inches						Door Swing Radius		Cubic Capacity, Feet	Weights, Lbs.	
	Inside			Outside Overall (including hardware)							
	Wide	High	Deep	Wide	High	Deep	Right	Left			
3729 SEA SID	58-3/16	37	29½	86¾	51	44-5/16	39¾	44-25/32	36.75	3707	4474

*Without Casters

NEW MAP AND PLAN UNITS

for use in
**No. 6028
SAFE-CABINET**



Two 11-drawer units are shown in a No. 6028 S.E.A. SAFE-CABINET. Note that lower drawer is equipped with partitions dividing the drawer into eight compartments, each with bail.



Single 10-drawer unit on closed base with tuck-away door open.

MORE USABLE DRAWER SPACE

Experience has shown that due to the value, bulk and flexibility of engineering tracings, most users of the standard 2" drawer Map and Plan units utilize only about one half of the usable drawer height. These new units are designed with 10 drawers of 1" inside height in cabinets which take no more space than the old style 5-drawer units. Each drawer can be divided into compartments if desired.

10-DRAWER UNIT: Has tuck-away slide-in door with steel tumbler lock.

11-DRAWER UNIT: Has extra drawer in same height cabinet, but does not include the slide-in door.



Two 10-drawer units on closed base, showing doors closed.

FIRE PROTECTION, TOO!

These new units can be housed in 6028 S.E.A. or 6028 M.E.B. SAFE-CABINET so that valuable maps, drawings, engineering tracings, etc. can be given certified 4-Hour or 2-Hour protection from fire.

SPECIFICATIONS

Catalog Number	Dimensions, Inches						Door Swing Radius		Cubic Capacity, Feet	Weights, Lbs.	
	Inside			Outside Overall (including hardware)							
	Wide	High	Deep	Wide	High	Deep	Right	Left		Net	Crated
6028 SEA	42-3/16	60	28 1/2	53-15/16	75 3/4	41-5/16	26-17/32	32-3/32	41.75	3375	3750
6028 SEA SID	42-3/16	60	28 1/2	70 3/4	76-7/16	41 1/2	31 3/4	36-25/32	41.75	3950	4425
*467 MD (20 dr. Map Unit)	40 1/2	2	26	—	57	—	—	—	—	789	—
*477 MD (10 dr. Map Unit)	40 1/2	2	26	—	29 1/2	—	—	—	—	433	—
*23990 (10 dr. Map Unit) or	39-19/32	1	26-3/32	42	20-11/32	28	—	—	—	272	300
*23991 (11 dr. Map Unit)	39-19/32	1	26-3/32	42	20-11/32	28	—	—	—	272	300
23999 (Base)	—	—	—	42	10-5/16	28	—	—	—	38	78

When Map Units are installed, they must be placed at the bottom of the SAFE-CABINET, and adjustment strips should be omitted from the space occupied by these units.

No. 6028 S.E.A. and 6028 S.E.A. S.I.D.



This is the largest standard SAFE-CABINET made and boasts a giant capacity of 41.75 cu. ft. Although every SAFE-CABINET interior can be adapted to almost any filing requirements, this model is particularly suited for the housing of maps, tracings, drawings, engineering sketches, etc. It provides the finest fire protection possible for original material of this nature which is so valuable and often irreplaceable.

This SAFE-CABINET is efficient as a working tool

as well as a "fire-fighter". The 2" deep Map and Plan drawers illustrated above are available in 10 or 20 drawer units and provide easily accessible housing for literally thousands of drawings or tracings. The 6028 S.E.A. S.I.D. model is equipped with slide-in doors.

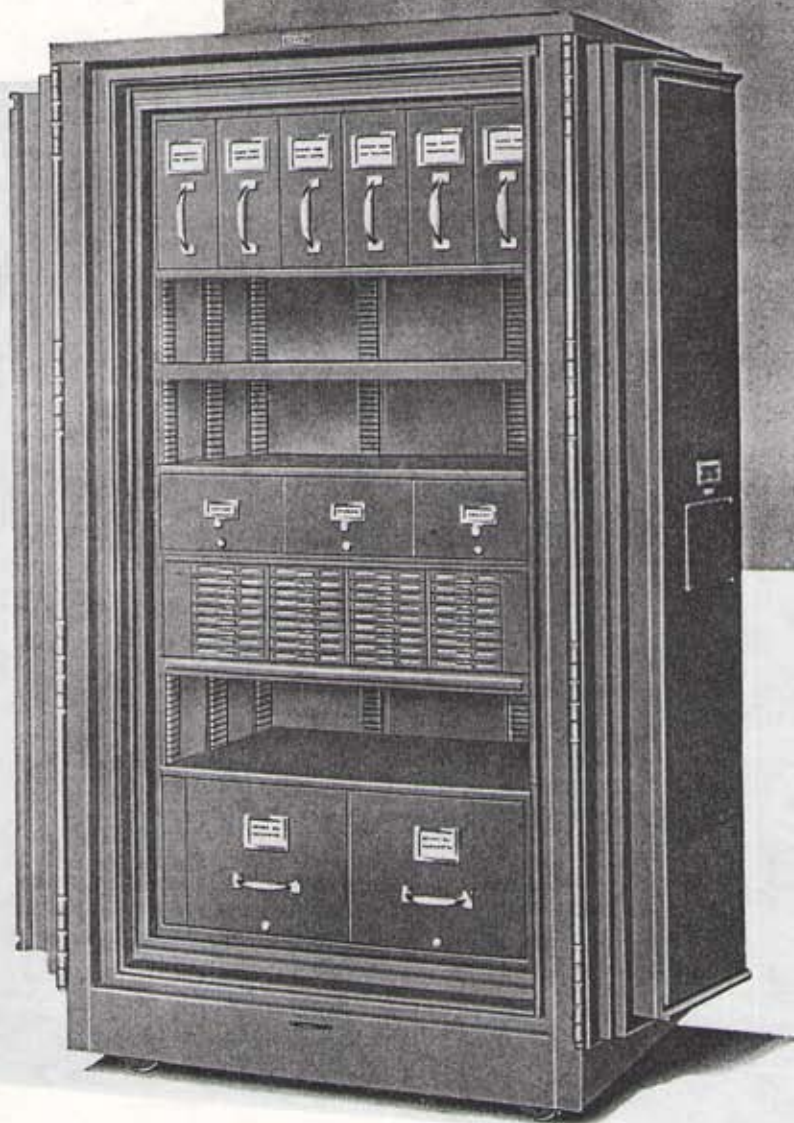
INTERIOR EQUIPMENT — For adjustable Interior Equipment to fit this SAFE-CABINET, see pages 90, 91 and 93.

No. 6025 S.E.A. and 6025 S.E.A. S.I.D.

section

f

4-hour
SAFE-
CABINET



This double-door SAFE-CABINET is ideally suited for the protection of your most vital records. It is extra deep with a spacious 26.56 cu. ft. capacity that can be utilized for a variety of different needs, depending on the Interior Equipment installed. "A" label SAFE-CABINET carries the 4-Hour Certification, the highest certification ever awarded a safe. The S.I.D. model is equipped

with slide-in doors.

Reliance on record housing of unknown or doubtful ability has put many firms out of business. Don't let it happen to you!

INTERIOR EQUIPMENT — For adjustable Interior Equipment available to fit this SAFE-CABINET, see pages 86 and 93.

SPECIFICATIONS

Catalog Number	Dimensions, Inches						Door Swing Radius		Cubic Capacity, feet	Weights, Lbs.	
	Inside			Outside Overall (including hardware)							
	Wide	Hight	Deep	Wide	High	Deep	Right	Left		Net	Crated
6025 SEA	30	60	25½	41¾	75¾	38-5/16	20-7/16	26	26.56	2650	2900
6025 SEA SID	30	60	25½	58-9/16	76-7/16	38¾	25-21/32	30-11/16	26.56	3190	3580