

Treasury TRTL-30x6



Treasury TRTL-30x6

The ISM Treasury TRTL-30x6 has been specifically developed to withstand the most concentrated attacks by sophisticated burglars today, and be light enough in weight to be easily installed in high rise buildings. The Treasury incorporates the same advanced design features and barrier materials found in all ISM high security products including the SuperDiamond TXTL-60 and the DiamondVault TRTL-30x6.

DOOR

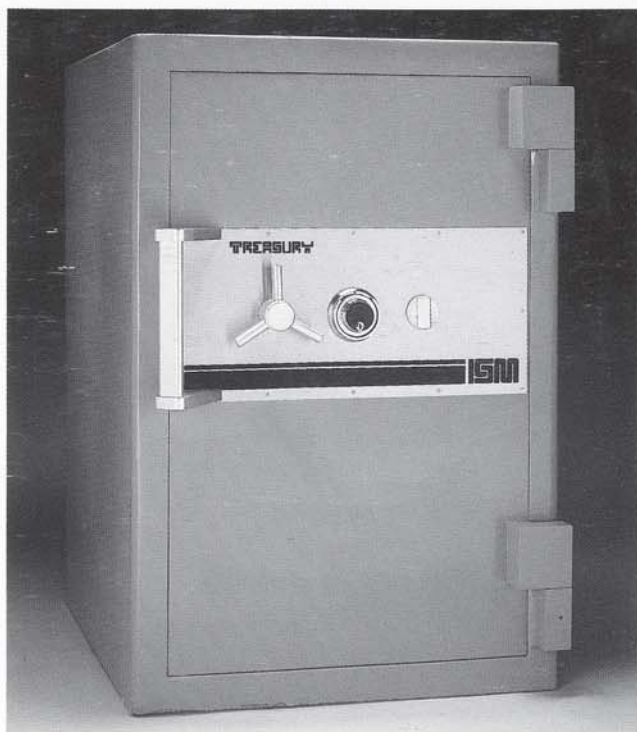
The Treasury has an overall thickness of 7½" (190 mm). It is constructed of outer and inner steel plates electrically welded together and enclosing a 3" (72 mm) thick cast of alchronite, ISM's unique, superior, advanced torch and drill resisting barrier defense material. Alchronite was developed to withstand the most concentrated attacks, using the most sophisticated equipment, by burglars today. A highly torch resistant cast alloy surrounds a consistently staggered drill resistant alloy multi-grid, assuring a complete barrier with no weak points. To provide additional strength and protection against a torch attack in the door jambs, a dense frame of copper alloy is strategically incorporated into the alchronite cast.

BODY

The Treasury body features a completely tailored one piece cast inner body of alchronite with a minimum thickness of 2.2" (52 mm) to a maximum boltwork protective area of 5" (125 mm). In addition, the entire body is constructed with a dense layer of Insutex, ISM's superior insulation material to protect the safe's contents against severe fires. The outer and inner bodies are encased in continuously electrically welded steel plates making up an entire body thickness of 4½" (114 mm).

LOCKS

The ISM Treasury is equipped with a maximum security Underwriters Laboratories Group I manipulation proof combination lock. A second maximum security nine lever key lock is provided in conjunction with the combination lock. When the door of the safe is closed, it is impossible to remove the key without securing the bolts in the locked position. Even if the combination lock is not engaged, the safe is still secure.



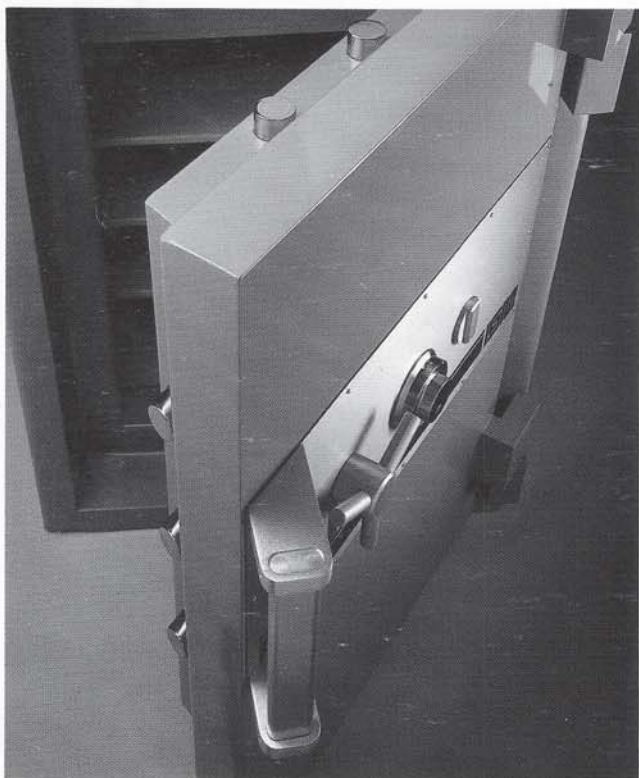


BOLTWORK AND LOCKING MECHANISM

The Treasury boltwork and locking mechanism was designed to give maximum protection against not only concentrated tool attacks from all directions, but also explosive attacks. Turning the capstan wheel operates a gear driven slide mechanism which engages each bolt into the alchronite bolt chamber. These massive slides move perpendicular to the bolts and provide a positive defense barrier against bolt attack.

RELOCKING MECHANISM

All locks and vital mechanism areas are protected by tempered glass plates. These plates, if attacked by tools, torches, or explosives, will shatter into pieces, thus activating the relocking mechanism. Each relocking bolt, located far from the combination and key lock is randomly placed on each safe.



HOLDUP DETERRENT MECHANISM

The Treasury may be equipped, as an optional extra, with a two or three movement, 144 hour timelock that locks the safe independent of any other lock. This method of locking prevents holdups after hours. A time delay combination lock is available as an optional extra in place of the key lock. This time delay combination lock can be preset to open the safe in a specified number of minutes during business hours. Signs for both devices are affixed to the outside of the safe.

INTERIOR FITTINGS

Adjustable/removable shelves are available for setting up the safe interior to accept jewelry trays, cash trays, rolled coins, and other valuables. In each Treasury is an inner vault activated by a single key lock.

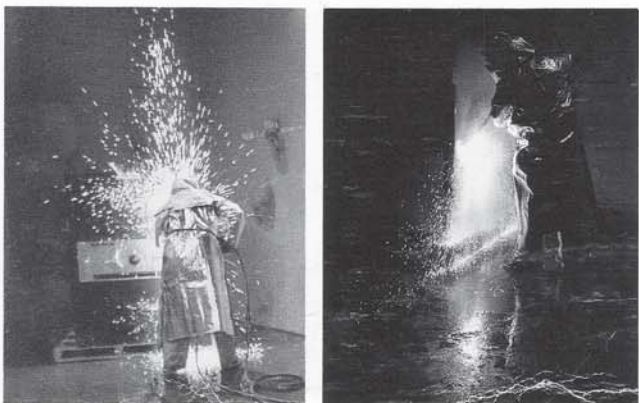
FINISH

A modern stainless capstan wheel and an anodized aluminum facia panel compliment the durable paint finish, standard on all ISM Security Equipment.

INSURANCE

To achieve immediate access into the United States market, the Treasury was submitted to the Underwriters Laboratories for testing, and passed the most severe TRTL 30x6 test.

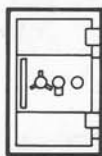
This label should be considered only as a point of departure when considering the superior security offered by this safe. **"WE HAVE DESIGNED AND CONSTRUCTED THE TREASURY TO PROTECT THE PRICELESS, NOT JUST TO MEET A STANDARD."**



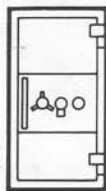
DIMENSIONS AND WEIGHTS



TR 2618



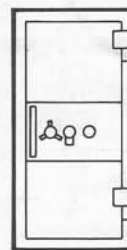
TR 3722



TR 4722



TR 5722



TR 6529



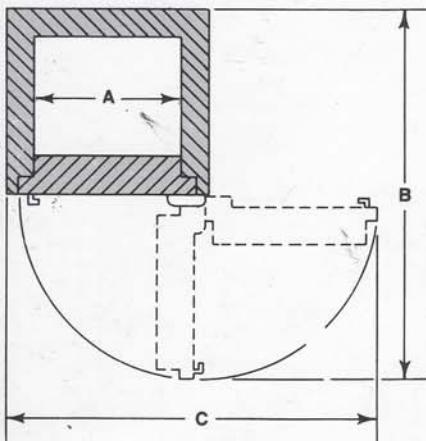
TR 7238

MODEL	INSIDE DIMENSIONS (in/mm)			OUTSIDE DIMENSIONS (in/mm)			CUBIC CAPACITY	DOOR WEIGHT	BODY WEIGHT	APPROX. TOTAL WEIGHT
	HEIGHT	WIDTH	DEPTH	HEIGHT	WIDTH	DEPTH*				
TR 2618	26.6" (.675m)	18.5" (.470m)	16.1" (.410m)	34.8" (.885m)	27.0" (.685m)	27.8" (.705m)	7,992" (4.6 cu./ft.)	485 lbs. (220 kg)	1450 lbs. (658 kg)	1935 lbs. (880 kg)
TR 3722	37.6" (.955m)	22.4" (.570m)	20.1" (.510m)	45.7" (1.160m)	30.9" (.785m)	31.7" (.805m)	16,929" (9.8 cu./ft.)	725 lbs. (329 kg)	2175 lbs. (986 kg)	2900 lbs. (1315 kg)
TR 4722	47.6" (1.210m)	22.4" (.570m)	20.1" (.510m)	55.7" (1.415m)	30.9" (.785m)	31.7" (.805m)	21,430" (12.4 cu./ft.)	862 lbs. (390 kg)	2587 lbs. (1175 kg)	3450 lbs. (1565 kg)
TR 5722	57.6" (1.465m)	22.4" (.570m)	20.1" (.510m)	65.7" (1.670m)	30.9" (.785m)	31.7" (.805m)	25,934" (15.0 cu./ft.)	990 lbs. (450 kg)	2970 lbs. (1350 kg)	3960 lbs. (1800 kg)
TR 6529	65.6" (1.665m)	29.3" (.745m)	20.1" (.510m)	73.6" (1.870m)	37.8" (.960m)	31.7" (.805m)	38,634" (22.4 cu./ft.)	1312 lbs. (595 kg)	3668 lbs. (1664 kg)	4980 lbs. (2260 kg)
TR 7238	72.8" (1.850m)	39.0" (.990m)	26.0" (.660m)	81.1" (2.060m)	47.1" (1.196m**)	37.6" (.955m**)	73,820" (42.7 cu./ft.)	1700 lbs. (770 kg)	5100 lbs. (2315 kg)	6800 lbs. (3085 kg)

*Add 2½" (65mm) to outside depth for handle.

**Add 3" (76mm) to outside depth for hinges and 1" (22mm) to outside width for hinges for Model TR 7238 only.

DOOR SWING PROJECTIONS



DOOR SWING DIMENSIONS

MODEL	A	B	C
TR 2618	18.5" (.470m)	52.8" (1.340m)	50.0" (1.270m)
TR 3722	22.4" (.570m)	60.6" (1.540m)	57.9" (1.470m)
TR 4722	22.4" (.570m)	60.6" (1.540m)	57.9" (1.470m)
TR 5722	22.4" (.570m)	60.6" (1.540m)	57.9" (1.470m)
TR 6529	29.3" (.745m)	67.5" (1.715m)	71.7" (1.820m)
TR 7238	39.0" (.990m)	83.9" (2.130m)	91.9" (2.335m)

In line with our policy always to provide the best in security, ISM reserves the right to incorporate any improvements and alter any specifications without prior notice.



ACCU-SAFES, INC.

112 Newtown Road • Plainview, NY 11803