



CHUBB



**3 $\frac{1}{2}$ "
VAULT
DOORS**

**ELEGANCE
IN DESIGN.**

**SUPERB
WORKMANSHIP.**

**SECURITY
FOR WHICH
CHUBB
IS KNOWN
AND
RESPECTED
ALL OVER
THE WORLD.**

These are
the reasons
a Chubb
vault door
should be
your first
choice.



Chubb Security the vital difference!

The Chubb 3 $\frac{1}{2}$ " vault door: High-level protection against burglar attack by torch, drill and explosives.

An extremely high level of acetylene torch and electric drill protection is achieved by the use of Chubb's own monolithic heterogeneous material which covers *the full practical height and width of the door*. This material is produced in our own facilities to ensure complete quality control.

Experience proves that burglar attacks on vault doors are not confined to the locking area only. That's why a Chubb door provides a formidable barrier to penetration by torch or drill wherever the door is attacked.

Chubb "C-BAR" locking, designed by our security engineers, places extra emphasis on anti-explosive techniques. Two vertical bars, rather than round bolts, interlock behind the frame on both the opening and hinge side of the door, and provide superior resistance to explosive attack.





**Chubb
3½"
Vault
Door
Model
One**



The Chubb Model One 3½" door with stainless steel finish is designed for the prestige location where maximum security must be combined with a highly attractive appearance. It qualifies for the 6R insurance rating, and exceeds the requirements of the Bank Protection Act.



This door incorporates Chubb's high security "full face" protection over the entire practical height and width.

The Chubb Model One 3½" door ensures that your vault will be a dramatic focal point in your premises.



Chubb 3 1/2" Vault Door Model Two

The Chubb Model Two 3 1/2" door gives you a balanced design of gleaming stainless steel and any color of your choice. It qualifies for the 6R insurance rating, and exceeds the requirements of the Bank Protection Act. This Chubb door gives you the opportunity to have your vault door "color keyed" to the decor of your premises.



This door incorporates Chubb's high security "full face" protection over the entire practical height and width.

This is a vault door that provides security in a most attractive and dramatic manner.

Standard Features

Locking Controls.

The door has two 4-number key-change combination locks, and a 3-movement timelock. The combination locks can be set for dual or single control as may be required. The lock spindles are designed to resist punching, pulling or drilling attack and the dials are of the "spy-proof" type.

Emergency Ventilator.

The Chubb ventilator is compatibly integrated into the frame of the door. It provides fresh air and also makes it possible to conduct two-way conversation and supply food and water to anyone inside the vault.

Clear Vision Day Gate.

This key-locking gate controls access into the vault during open hours. It blends acrylic panels and polished aluminum framing to be both functional and decorative.

Anti-Bandit Lock.

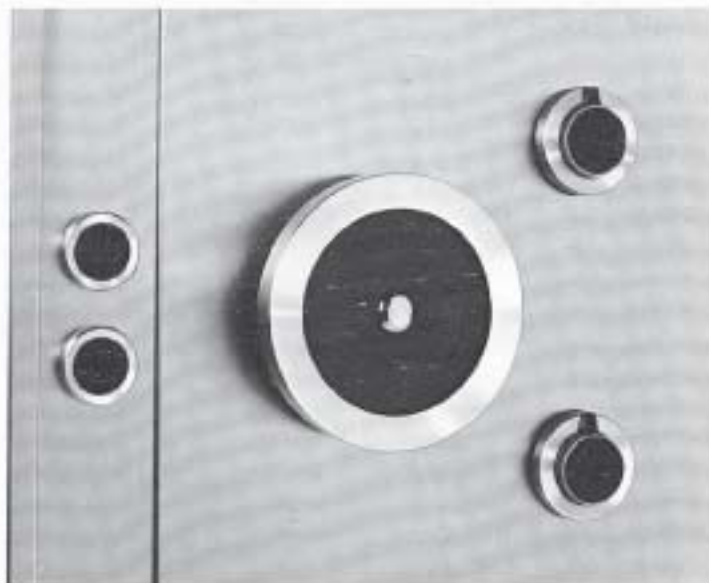
This device is designed to reduce the possibility of customers and employees being locked inside the vault. Operated by key, it can maintain the locking mechanism in a condition which prevents closing of the door.

Convenient Flat Sill.

All Chubb doors offer an extra wide clear opening with "anti-slip" flat sill, to provide easy entry and exit for customers, employees and wheeled equipment.

Insurance Classification.

The Chubb 3½" vault door meets the requirements of all regulatory agencies and qualifies for a 6R insurance rating.



Chubb Decorative Extended Architraves

Chubb-designed optional architraves compliment and enhance the overall appearance of the vault entrance. The architrave illustrated is a careful balance of stainless steel and color (of your choice) which creates a most impressive effect.

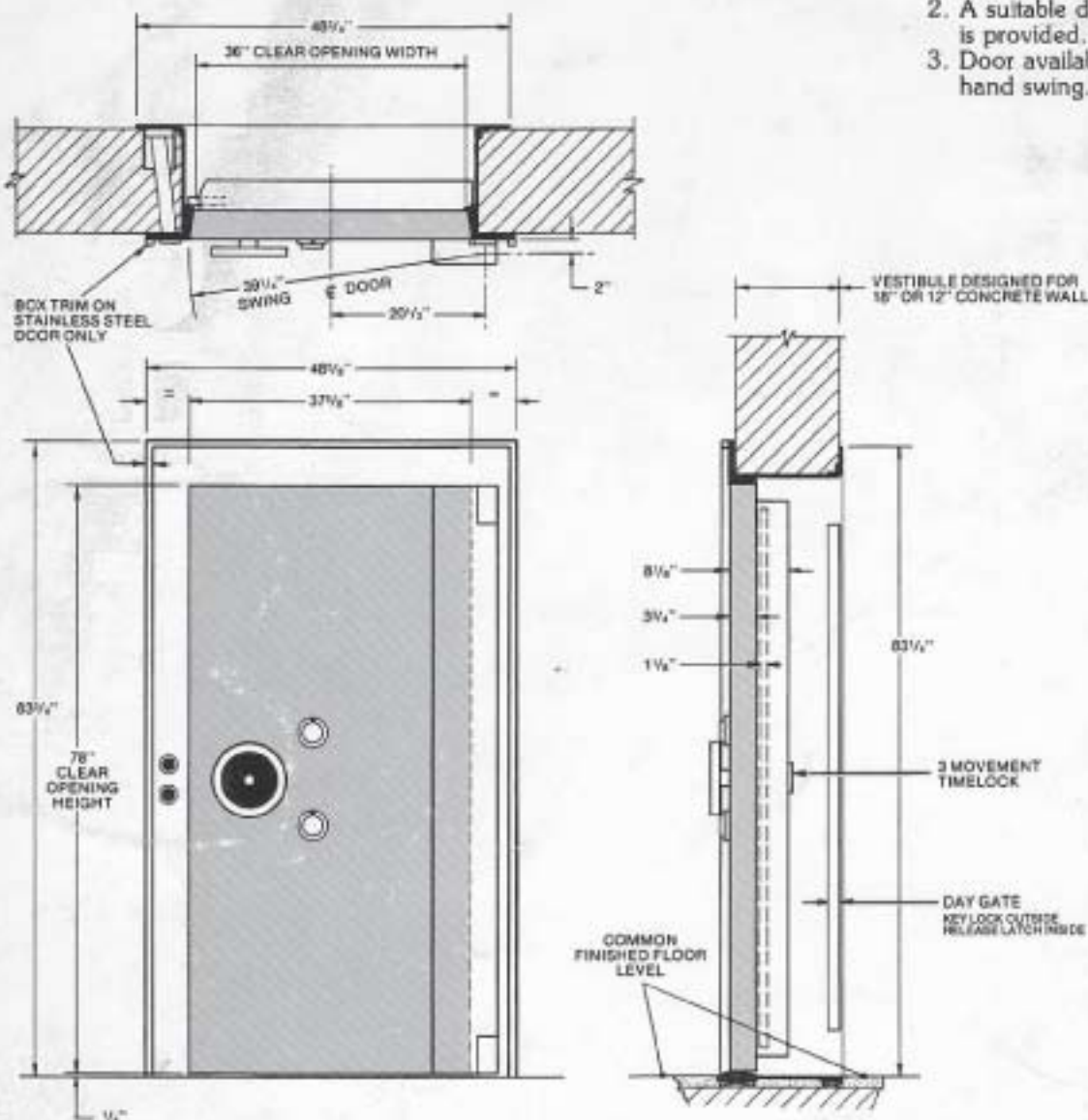
This particular architrave is made in 7" wide modular stainless steel sections, allowing flexibility of extended width on either or both sides of the door to achieve a custom look at reasonable cost.



Dimensions

NOTES:

1. Projection of door when opened 180° is 12 1/4" from front face of frame to projecting rear face of door.
2. A suitable decorative door stop is provided.
3. Door available right or left hand swing. (Right hand swing shown)



Chubb Security Safes
a division of Chubb Industries Inc.

Chubb reserves the right to alter designs and specifications of equipment without notice or obligation, in the interest of product improvement.