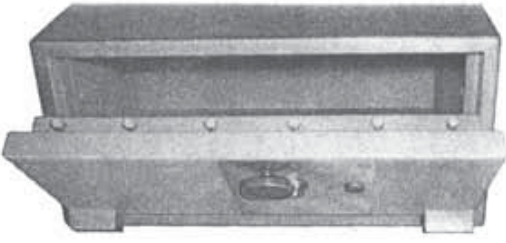


Columbia Range
3.A. only. UL TRTL 30X6)
Jeweller MK II
3.A. JEWELLER MK IV]



Columbia

This safe range incorporates the latest construction techniques, creating a cost/weight efficient range, designed for low floor loadings.

The first 2nd generation range to meet UL TRTL 30X6 requirements.

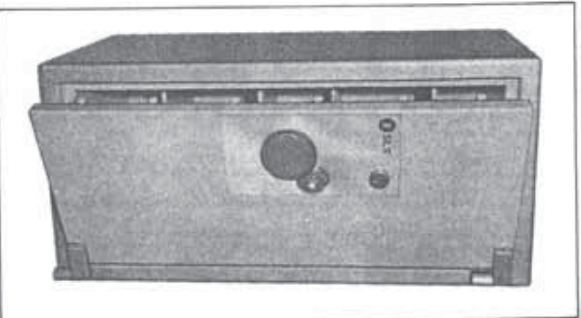
Jeweller MK II

Truly six-sided protection utilizing many of the SLS patented features in terms of materials. Dual locking as standard.

The first manufacturer to achieve the new UL TRTL 30X6 test and introduce their second generation Torch C Tool Resistant TRTL range of safes; designed to offer yet more sophisticated protection at a cost with even more weight efficient materials. The new range offers high overnight risks to attract low insurance premiums, with the 'Peace of mind'; one of the vital assets of the SLS range of safes.

DEL.	Dimensions - inches		Weights Kgs lbs	
	INTERNAL	EXTERNAL	Columbia	Jeweller MK II
16	23 x 16 x 16	30 x 23 x 25 1/2	1415	614
10	35 x 20 x 19	42 x 27 x 28 1/2	2240	964
30	50 x 20 x 19	57 x 27 x 28 1/2	2910	1248
10ED*	50 x 20 x 25	57 x 27 x 34 1/2	3275	1414
15	Details to be advised			3110

Cashguard A.T.
Universal MK III
[USA UL TL30 Tested 6-Sides]



Cashguard Anti-Torch

The SLS Cashguard Anti-Torch safe incorporates the features of the SLS Universal Mark III range, but the resistance is substantially increased by the addition of oxygenetylene protection in the body as well as the door. Available in five sizes. Dual locking optional.

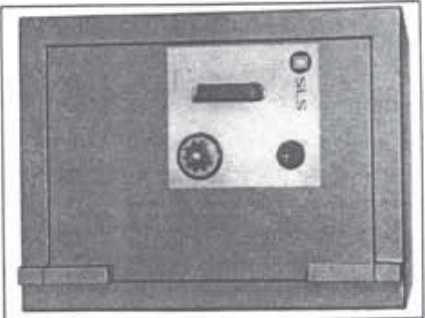
Universal Mark III

The SLS Universal Mark III is a medium risk safe designed for both commercial and domestic application. The safe incorporates many advanced features to resist the professional criminal using a variety of different attack methods. Available in five sizes. Dual locking optional.

Model	INTERNAL MM - INS		EXTERNAL MM - INS		Cashguard		Universal	
	LBS	KGS	LBS	KGS	LBS	KGS	LBS	KGS
1812	458	305	229	635	483	445	825	375
	18	12	9	25	19	17 1/2	790	340
2316	585	407	407	762	584	622	1290	585
	23	16	16	30	23	24 1/2	1170	530
3520	890	508	483	1067	686	699	1880	895
	35	20	19	42	27	27 1/2	1710	775
5020	1270	508	483	1448	666	699	2650	1200
	50	20	19	57	27	27 1/2	2450	1110
5020ED	1270	508	635	1448	686	851	3010	1366
	50	20	25	57	27	33 1/2	2810	1275

Continental Mark IV

[USA UL TL15



The latest development in a series of high quality, light range safe the SLS Continental Mark IV offers improved specification protect moderate amounts cash and valuables against attack by force, drills and explosives to the body, in addition to the protection against oxy-acetylene attack, in the door related areas.

Model	INTERNAL MM - INS		EXTERNAL MM - INS		LBS		KGS	
	LBS	KGS	LBS	KGS	LBS	KGS	LBS	KGS
1812	458	305	229	635	483	430	742	336
	18	12	9	2	19	17		
2316	585	407	407	762	584	608	1230	558
	23	16	16	30	23	24		
3520	890	508	483	1067	686	684	1880	853
	34	20		41 1/2	27 1/2	27 1/2		

Tellers Trolley



Previously available only to Banks, SLS introduces the Tellers Cash Unit, designed specifically to counteract the threat of day-time robbery.

Castors add 4 1/2" / 120mm to Height.
 Pull handles add 2" / 50mm to Depth.
 Other Sizes/Models can be produced for bulk orders.

	H	W	D	WT
SLS/MB-29	29"	21"	22 1/2"	125lbs
	736mm	534mm	570mm	56.7kg