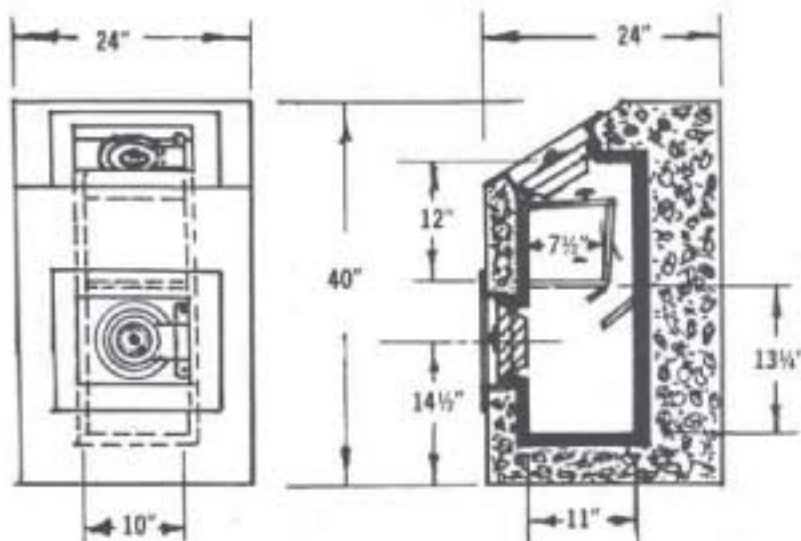


MAJOR

DEPOSITORY MODEL D-3000

"ER" RATED



INSURANCE—"ER" rated, plus 10% for U.L. Relocking Device Label.

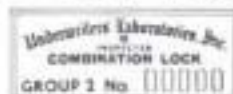
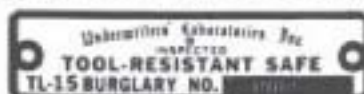
2 COMPARTMENT DEPOSITORY

OFTEN used for under counter installation—access to the change compartment and deposit chute is from top door—deposit chute approximately 2" wide—protected with 3 saw toothed baffles.

- **2 DOORS**—8" in diameter—6 7/8" clear door opening.
- **DOORS**—chrome plated 1 1/2" thick steel, equipped with hard plate to prevent drilling.
- **LOCK**—Underwriters TL-15 Label—parts all treated against corrosion.
- **EXTERIOR FINISH**—Major grey.
- **INTERIOR**—
12 Gauge Steel Cladding filled with concrete provides maximum protection against carry-off or fire.
- **SHIPPING WEIGHT**—Filled—approximately 2,000 lbs.
- **EMPTY**—790 Lbs.
- **OPTIONAL EQUIPMENT**—added cost—
Key Lock Dial
Anchor Bolts
Special Interiors



LOOK FOR THESE LABELS — THEY INSURE YOU TOP SECURITY

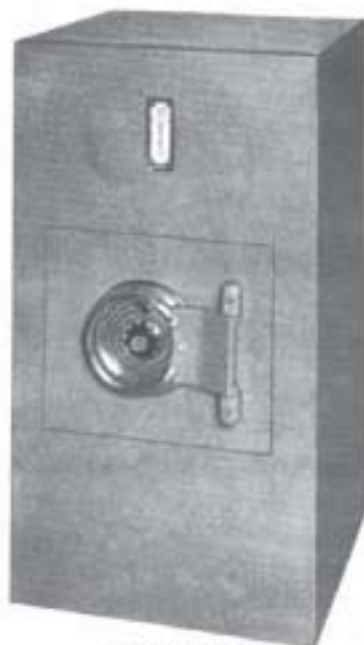


The Criterion of Quality... **MAJOR SAFES** ... Los Angeles, Calif. 90023

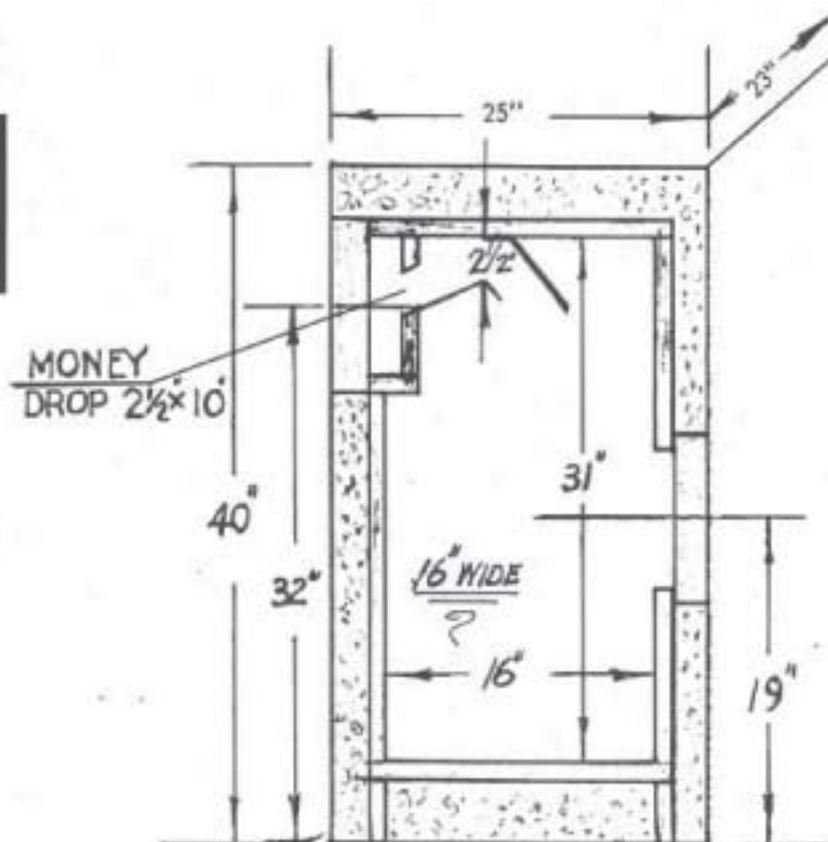
MAJOR

DEPOSITORY MODEL D-7900

"ER" RATED

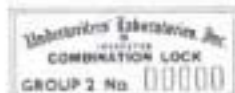


MODEL D-7900



- **INSURANCE**—"ER" Rated plus underwriter's Relocking Device label.
 - **2 - 8-inch Door Inexpensive Depository**—large 7936 cu. in. capacity.
 - **LOCK**—Underwriters Lab. Group 2 combination lock label.
 - **DOORS**—chrome plated, jeweled and equipped with a hard plate to prevent drilling.
 - **EXTERIOR**—Major Grey.
Lock PARTS all treated to prevent corrosion.
- Approximate Shipping Weights
Empty — 890 lbs.
Filled — 2050 lbs.
7936 Cu. In. Capacity

LOOK FOR THESE LABELS — THEY INSURE YOU TOP SECURITY

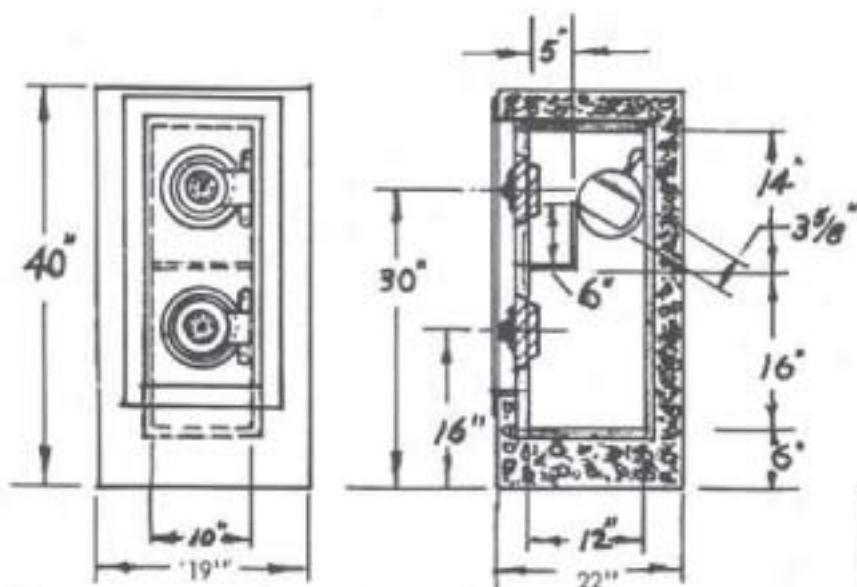


The Criterion of Quality... **MAJOR SAFES** ... Los Angeles, Calif. 90023

MAJOR

DEPOSITORY MODEL D-3500

"ER" RATED



Clear Door Opening 6 7/8"

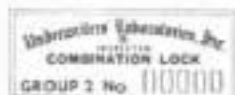
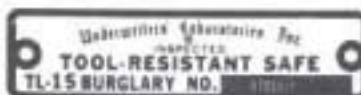
MODERATELY PRICED TWO-COMPARTMENT UNIT

- **TOP DOOR** gives access to rotary fish-proof hopper—takes packages $8\frac{3}{4}'' \times 3'' \times 5\frac{3}{4}''$ —by rotating hopper forward the deposit falls into lower compartment—the top door also gives access to change compartment $10'' \times 6'' \times 5''$.
- **INSURANCE**—"ER" rated, plus 10% relock label.
- **THE LOWER COMPARTMENT** will accommodate a substantial number of deposits.
- **DOORS**—2 chrome plated equipped with hard plate to prevent drilling. $1\frac{1}{2}''$ thick—8" diameter.
- **LOCK**—Underwriters Group 2—Combination lock label all lock parts treated to prevent corrosion.
- **BODY**—1" electrically welded carbon steel.
- **FINISH**—Exterior—Major grey.
- **OPTIONAL EQUIPMENT**—at added cost

Key Lock Dial — Anchor Bolts — Special Interiors.

Approximate Shipping Weight — Filled 1860 Lbs. — Empty 912 Lbs.

LOOK FOR THESE LABELS — THEY INSURE YOU TOP SECURITY



The Criterion of Quality.... **MAJOR SAFES** Los Angeles, Calif. 90023

MAJOR

BOWLING ALLEY DEPOSITORY

"ER" RATED



NOTE—
HOPPER
DOOR REVERSED,
OR ALL
THREE DOORS
MAY FACE
FRONT.
SEE CUT
BELOW

MAJOR SAFE DEPOSITORY

3-Door Depository—TOP DOOR 7 $\frac{3}{4}$ " Diameter ROTARY HOPPER. 2 lower doors 10" Diameter Clear Door Opening 9 $\frac{1}{2}$ ". BOTTOM COMPARTMENT for storage. HOPPER DOOR can be installed in back or as desired. Hopper will receive packages—10 $\frac{3}{4}$ " x 4 $\frac{1}{2}$ " x 7".

INSURANCE—"ER" rated, plus 10% reduction of premium for relocking device label.

DOORS—chrome plated, 1 $\frac{1}{2}$ " thick—hard plate to prevent drilling.

BODY—constructed of electrically welded steel.

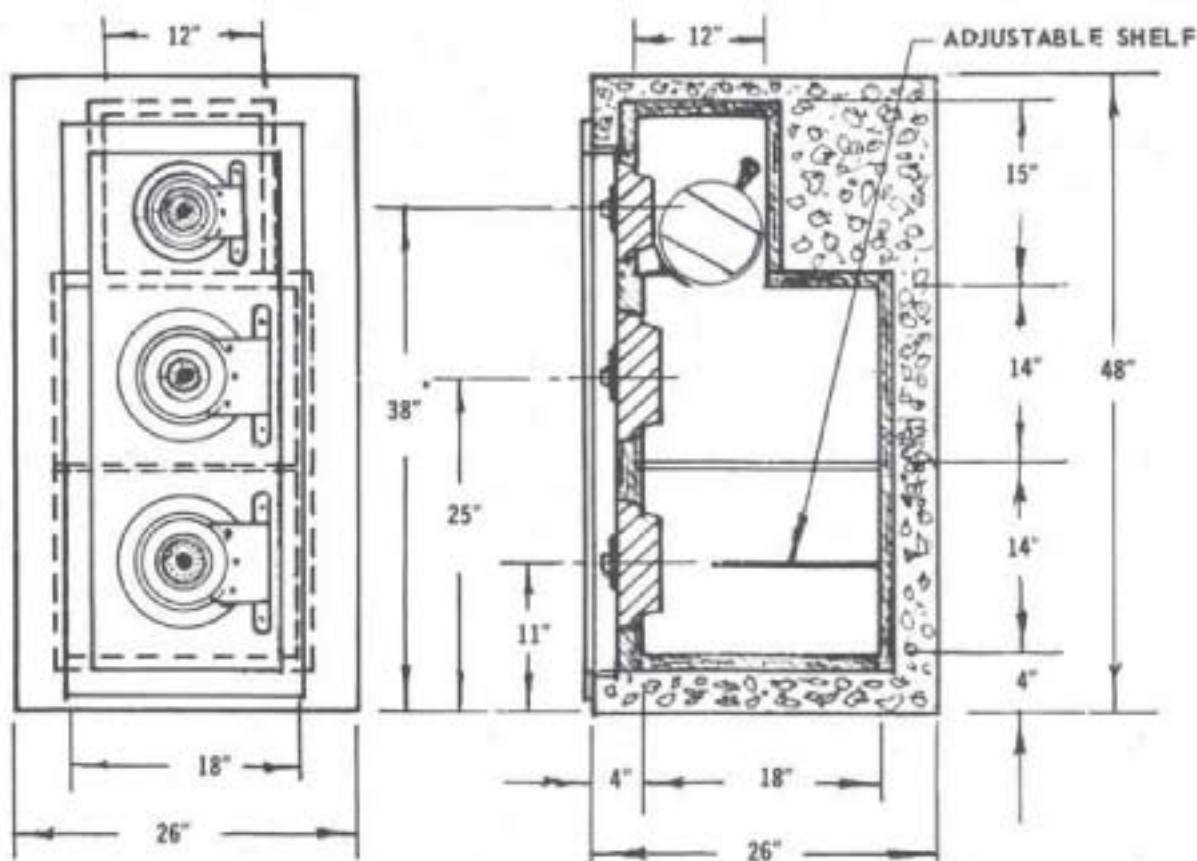
LOCK—1,000,000 combination change—U.L. Group 2 lock label.

ALL PARTS—treated against corrosion.

EXTERIOR—finish Standard Major grey.

OPTIONAL EQUIPMENT—at added cost. Key Lock Dial—Anchor Bolts—Special interiors.

SHIPPING WEIGHT—Empty, 2000 lbs.—filled 4800 lbs.

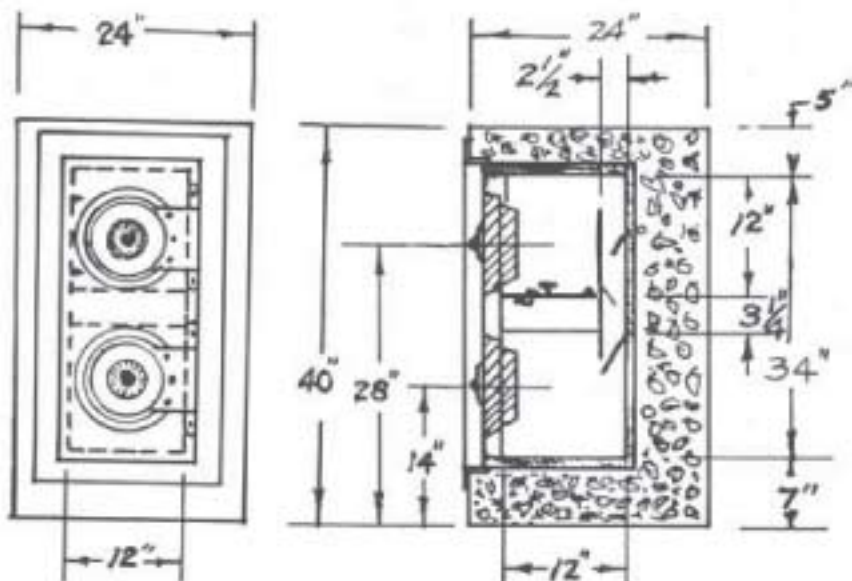


The Criterion of Quality.... **MAJOR SAFES** Los Angeles, Calif. 90023

MAJOR

DEPOSITORY MODEL D-9000

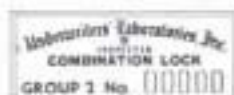
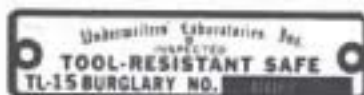
"ER" RATED



- SPECIFY if both doors forward or reversed (optional).

MAJOR SAFE DEPOSITORY

- **INSURANCE**—"ER" rated, plus 10% reduction of premium for group 1 relocking device.
- **DOOR**—chrome plated—1 1/2" thick—hard plate to prevent drilling—CLEAR DOOR OPENING 9 1/2".
- **BODY**—constructed of 1" electrically welded steel.
- **TWO COMPARTMENTS**—top working compartment and lower deposit or collecting compartment reduce the risk from armed robbery or burglary attack.
- **MANAGER'S COMPARTMENT**—located across the full 12" width in the bottom of the top compartment, is protected by a key locked hinged door.
- **DEPOSIT CHUTE**—with the opening located high and to the rear is protected by 3 fixed and one hinged baffle—make overflow and fishing extremely improbable.
- **ALL PARTS**—treated against corrosion.
- **FINISH**—Exterior, standard Major grey.
- **SHIPPING WEIGHT (approximately):**
Empty, 1120 lbs. — Filled, 2370 lbs.



The Criterion of Quality.... **MAJOR SAFES** Los Angeles, Calif. 90023