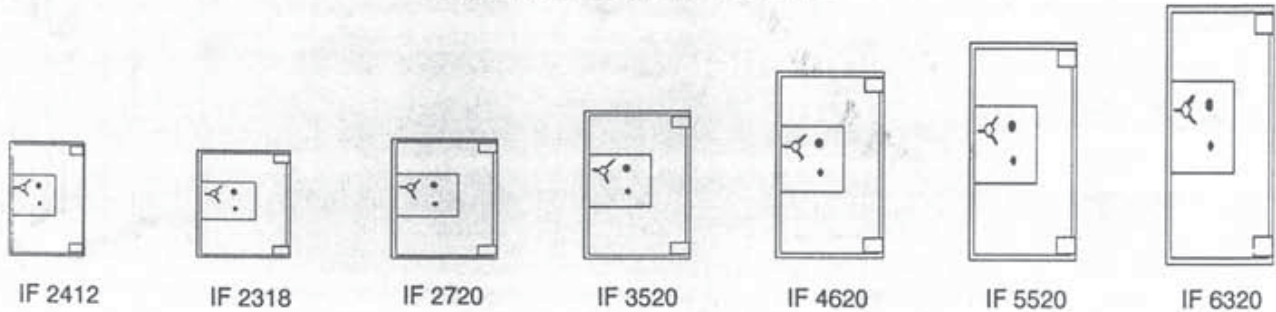


# INFINITY

## TL-15 SIX SIDED PROTECTION + FIRE PROTECTION

### DIMENSIONS AND WEIGHTS



400-  
3887

MODEL	INSIDE DIM.			OUTSIDE DIM.			CUBIC CAPACITY	APPROX. TOTAL WEIGHT
	H	W	D	H	W	D*		
IF 2412	23.0	12.0	10.0	31.5	20.0	20.0	1.60	850
IF 2318	21.5	18.0	16.0	29.5	26.0	26.0	3.60	1300
IF 2720	26.0	20.0	20.5	34.0	28.5	31.5	6.20	1750
IF 3520	33.0	20.0	20.5	41.0	28.5	31.5	7.80	2050
IF 4620	44.0	20.0	20.5	52.0	28.5	31.5	10.50	2400
IF 5520	53.0	20.0	20.5	61.0	28.5	31.5	12.60	2850
IF 6320	61.0	20.0	20.5	69.0	28.5	31.5	14.50	3100

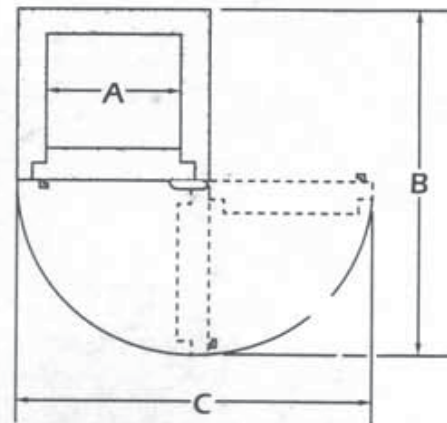
\* Add 2" to outside depth for handle.

### DOOR SWING DIMENSIONS

MODEL	A	B	C
IF 2412	12.0	35.87	37.50
IF 2318	18.0	46.63	48.80
IF 2720	20.0	56.50	53.50
IF 3520	20.0	56.50	53.50
IF 4620	20.0	56.50	53.50
IF 5520	20.0	56.50	53.50
IF 6320	20.0	70.50	54.60

Megasafe Industries reserves the right to incorporate any improvements and alter any specifications without prior notice.

### DOOR SWING PROJECTIONS



## ACCU-SAFES, INC.

P.O. BOX 51  
PLAINVIEW, NY 11803  
(718) 833-3872

FAX NO. (718) 962-2517