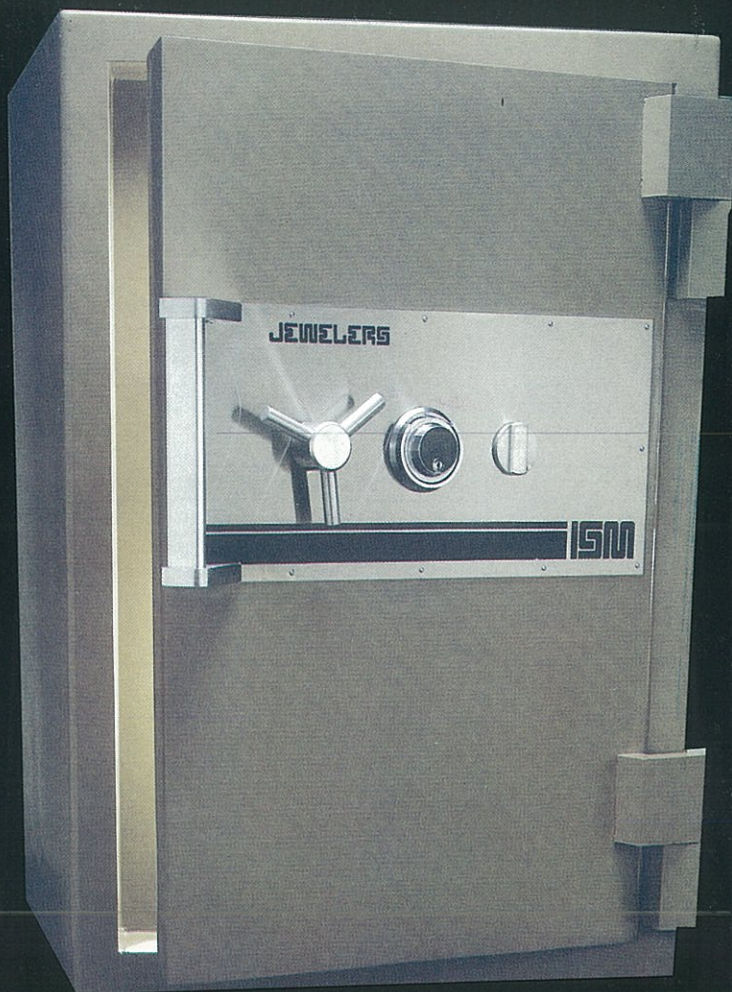




ISM

JEWELERS TRTL-15x6

The ISM Jewelers is one of the first safes to receive the Underwriters Laboratories newest label, the TRTL-15x6 torch and tool resistant on all six sides. The Jewelers offers features in physical construction, use of materials and mechanism design, that together form a unique defense barrier in which each component enhances ISM's concept of total security.



DOOR

The Jewelers has an overall thickness of 6 $\frac{1}{2}$ " (165mm). It is constructed of outer and inner steel plates electrically welded together and enclosing a 2" (50mm) thick cast of alchronite, ISM's unique, superior, advanced torch and drill resisting barrier defense material. Alchronite was developed to withstand the most concentrated attacks, using the most sophisticated equipment, by burglars today. A highly torch resistant cast alloy surrounds a consistently staggered drill resistant alloy multi-grid, assuring a complete barrier with no weak points. To provide additional strength and protection against torch attack in the door jambs, a dense frame of copper alloy is strategically incorporated into the alchronite cast.

BODY

The Jewelers body features a completely tailored one piece cast

inner body of alchronite with a minimum thickness of 1.6" (40mm) to a maximum boltwork protective area of 5" (125mm). In addition, the entire body is constructed with a dense layer of Insutex, ISM's superior insulation material to protect the safe's contents against severe fires. The outer and inner bodies are encased in continuously electrically welded steel plates making up an entire body thickness of 4" (102mm).

LOCKS:

The ISM Jewelers is equipped with a maximum security Underwriters Laboratories group I manipulation proof combination lock. A second maximum security nine lever key lock is provided in conjunction with the combination lock. When the door of the safe is closed, it is impossible to remove the key without securing the bolts in the locked position. Even if the combination lock is not engaged, the safe is still secure.

Boltwork:

The boltwork and locking mechanism were designed to give maximum protection against explosive attacks from all directions. The safe has a three way moving boltwork with fixed bolts on the hinge side of the door.

Relocking Devices:

The locks and vital mechanism areas are protected by a special glass plate which if tampered with releases a number of randomly located relockers independent of the locks. This provides the safe with a maximum security deterrent.

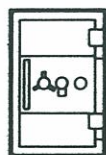
Interior Fittings:

Adjustable/removable shelves are available for setting up the safe interior to accept trays for jewelry, cash, and other valuables.

DIMENSIONS AND WEIGHTS



JS 2517



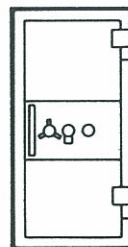
JS 3622



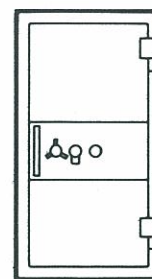
JS 4622



JS 5622



JS 6428



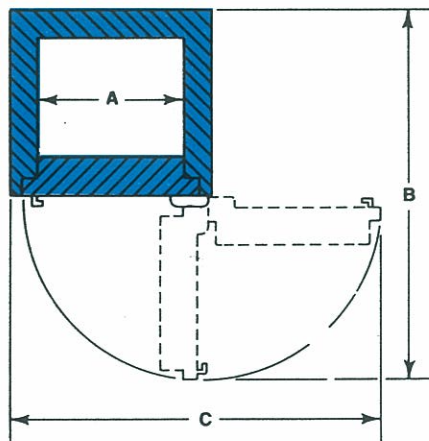
JS 7137

MODEL	INSIDE DIMENSIONS (in/mm)			OUTSIDE DIMENSIONS (in/mm)			CUBIC CAPACITY	DOOR WEIGHT	BODY WEIGHT	APPROX. TOTAL WEIGHT
	HEIGHT	WIDTH	DEPTH	HEIGHT	WIDTH	DEPTH*				
JS 2517	25.4" (.645m)	17.5" (.445m)	16.1" (.410m)	33.6" (.860m)	25.6" (.650m)	27.2" (.690m)	7,156" (4.1 cu./ft.)	377 lbs. (171 kg)	1338 lbs. (607 kg)	1715 lbs. (778 kg)
JS 3622	36.2" (.920m)	22.8" (.580m)	20.1" (.510m)	44.7" (1.135)	30.9" (.785m)	31.1" (.790m)	16,590" (9.6 cu./ft.)	566 lbs. (257 kg)	2009 lbs. (913 kg)	2575 lbs. (1170 kg)
JS 4622	46.3" (1.175m)	22.8" (.580m)	20.1" (.510m)	54.7" (1.390m)	30.9" (.785m)	31.1" (.790m)	21,218" (12.3 cu./ft.)	668 lbs. (303 kg)	2367 lbs. (1077 kg)	3035 lbs. (1380 kg)
JS 5622	56.7" (1.440m)	22.8" (.580m)	20.1" (.510m)	65.2" (1.655m)	30.9" (.785m)	31.1" (.790m)	25,985" (15.0 cu./ft.)	775 lbs. (352 kg)	2745 lbs. (1248 kg)	3520 lbs. (1600 kg)
JS 6428	64.2" (1.630m)	28.3" (.720m)	20.1" (.510m)	72.6" (1.845m)	36.4" (.925m)	31.1" (.790m)	36,520" (21.1 cu./ft.)	1160 lbs. (526 kg)	3304 lbs. (1504 kg)	4465 lbs. (2030 kg)
JS 7137	71.3" (1.810m)	37.6" (.955m)	26.0" (.660m)	79.7" (2.025m)	45.7" (1.160m**)	36.6" (.930m**)	69,702" (40.3 cu./ft.)	1630 lbs. (740 kg)	4640 lbs. (2110 kg)	6270 lbs. (2850 kg)

*Add 2½" (65mm) to outside depth for handle.

**Add 3" (76mm) to outside depth for hinges and 1" (22mm) to outside width for hinges for Model JS 7137 only.

DOOR SWING PROJECTIONS



DOOR SWING DIMENSIONS

MODEL	A	B	C
JS 2517	17.5" (.445m)	50.8" (1.290m)	47.2" (1.200m)
JS 3622	22.8" (.580m)	60.0" (1.525m)	57.9" (1.470m)
JS 4622	22.8" (.580m)	60.0" (1.525m)	57.9" (1.470m)
JS 5622	22.8" (.580m)	60.0" (1.525m)	57.9" (1.470m)
JS 6428	28.3" (.720m)	65.6" (1.665m)	68.9" (1.750m)
JS 7137	37.6" (.955m)	81.5" (2.070m)	88.4" (2.245m)

In line with our policy always to provide the best in security, ISM reserves the right to incorporate any improvements and alter any specifications without prior notice.

