

Experience in over 100 countries



HARWOOD



**JEWELVAULT
UL TL 30
COMPOSITE / 6-SIDED**

**GEMVAULT
UL TR TL 30x6**



An impressive control panel enhances both JEWELVAULT and GEMVAULT including bolt-throwing handwheel, combination lock and keylock with anti-fiberoptic keyhole cover lock.

HARWOOD, with experience in high-security in over 100 countries, presents the incomparable JEWELVAULT UL TL 30 and GEMVAULT UL TRTL 30x6 which are the outcome of 75 years patient research, development and rigorous testing by Bernardini, one of the world's major safe and vault manufacturers since 1912.

Special materials employed in the body and door of these two fine high-security safes resist the scientific methods of attack which criminals can be expected to use with increasing frequency over the remaining years of this century. New techniques give unrivalled overall strength against force of all kinds including the latest keyhole cover lock which prevents fiberoptic probe readings otherwise possible through safe keyholes.

JEWELVAULT UL TL 30



DOOR AND BODY

The JEWELVAULT combines exceptional six-sided composite strength and space-age protection devices with imposing elegance. The massive 4½" thick door and 3¼" thick body structure contain some of the most advanced high security protection materials ever developed. A cast matrix houses nuggets of exceptional hardness to combat all

known power tools, including both the limpet magnetic diamond-tipped core drill and the electric jack-hammer as well as other sophisticated attack weapons. Carbon fiber provides exceptional tensile strength and a good measure of protection against thermal cutting techniques.

LOCKWORK

The heart of the lock mechanism is protected by a revolutionary hardened steel encasement of ball bearings which is quite impenetrable to even the most vicious of all diamond or



*JEWELVAULT UL TL 30
Model 5920*



carbide-tipped drills. Additionally, a sensitive mechanism is mounted "live" to release a multiplicity of emergency relocking devices in the event of a major attack.

Locking is by Group 2 UL classified combination lock with private key change capability. In addition, the safe has a high-security keylock with keys provided in triplicate. The lock spindle incorporates drill and punch resistant features and the boltwork moves both horizontally and vertically deep into the protective body structure. Each polished steel bolt measures an exceptional 1¼" diameter. The door is removable to reduce the weight of the safe by one third for restricted elevator installations.

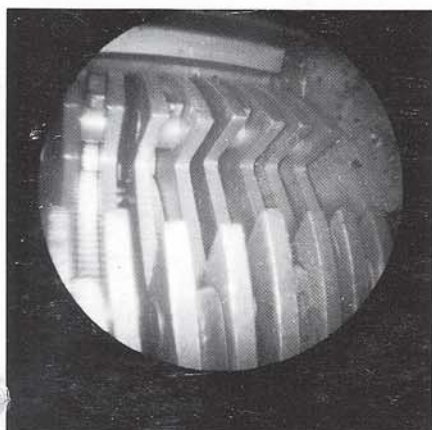
FIRE PROTECTION

An insulating material is incorporated into the construction of the JEWELVAULT ensuring a high degree of fire protection for the contents.

AN INVESTMENT IN TOMORROW'S PROTECTION TODAY.

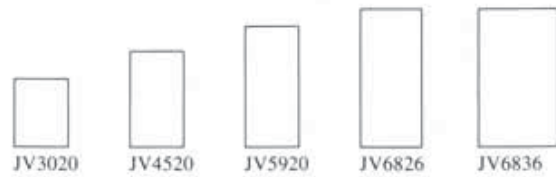
ANTI-FIBEROPTIC KEYHOLE COVER LOCK

Reportedly "the greatest technological advance in the safe cracking trade" has been the development of fiberoptics. Pioneered by the medical profession to cut back on the need for exploratory surgery, fiberoptics have been assimilated into the burglar's arsenal providing invaluable glimpses into the whereabouts and the workings of the locking mechanisms. The most vulnerable point of entry is through the keyhole. Bernardini provides an anti-fiberoptic keyhole cover lock which protects against this form of attack on both the GEMVAULT UL TRTL 30x6 and the JEWELVAULT UL TL 30 safes. The insurance companies are constantly in the process of revising their rating standards and fiberoptics is expected to figure strongly in their requirements.



GEMVAULT UL TRTL 30x6
Model 5920

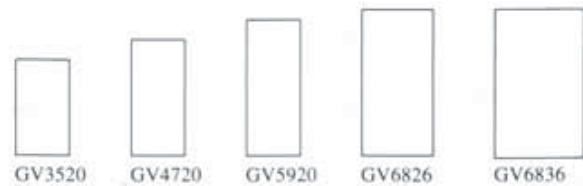
A view of the inside of a combination lock taken through a fiberoptic boroscope inserted through a safe door showing combination wheels easily aligned for opening.



JEWELVAULT UL TL 30

PRICE	L/P 36	MODEL	INTERNAL/INCHES			EXTERNAL/INCHES			CUBIC FEET	WEIGHT POUNDS	SHELF QTY.	DOOR SWING	
			H	W	D	H	W	D*				A	B
		JV3020	30	20	21	36½	26½	29	7.3	1480	2	53	48
		JV4520	45	20	21	51½	26½	29	10.9	1940	3	53	48
		JV5920	59	20	21	64¾	26¾	29	14.3	2400	4	53	48
		JV6826	68	26	21	74½	32½	29	21.5	2930	5	59	60
		JV6836	68	36	26	74¾	42¾	34	36.8	3920	5	74	80

*ADD 2½" TO DEPTH FOR HANDLE & HINGES

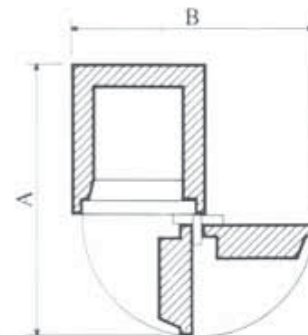


GEMVAULT UL TRTL 30x6

PRICE	L/P 36	MODEL	INTERNAL/INCHES			EXTERNAL/INCHES			CUBIC FEET	WEIGHT POUNDS	SHELF QTY.	DOOR SWING	
			H	W	D	H	W	D*				A	B
		GV3520	35	20	21	50	31	34½	8.5	2900	2	62	55½
		GV4720	47	20	21	62	31	34½	11.4	3800	3	62	55½
		GV5920	59	20	21	74	31	34½	14.3	4180	4	62	55½
		GV6826	68	26	21	78½	37	34½	21.5	5280	5	68½	68½
		GV6836	68	36	27	78½	47	40¾	38.3	6820	5	86¾	88½

*ADD 2½" TO DEPTH FOR HANDLE & HINGES

- Lease purchase based on 36-month lease with minimum buyout at the end. Other options available.
- Other sizes available on special order basis.
- Locking compartments and other interior fittings available.
- We reserve the right to alter specifications without notice or obligation in the interest of product improvement.



ACCU-SAFES, INC.
Sales • Service • Moving

PLAINVIEW, NEW YORK 11803
1-800-660-3872