

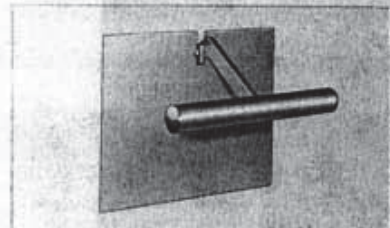
## 1 HOUR DOORS

**LABELS:** Underwriters' Laboratories fire resistive label and Relocking label.

**INSURANCE:** Class "B" Mercantile Burglary Insurance.

**WALL OPENING:** See details at right.

**ADJUSTABLE WALL FRAME:** The adjustable wall frame eliminates the problem of making the wall to fit the door frame. This feature can save many dollars in installation costs. (See "e" dimensions in schedule.)



### PANIC BAR ESCAPE MECHANISM:

The Panic Bar Escape Mechanism is designed to prevent forced or accidental lock-in. No handles to turn. No knobs to twist. Just push on the panic bar to open the door.

**FINISH:** Textured Gray. Bolt handle and dial of modern design in chrome.

**RECOMMENDED USE:** 1-HR. DOOR MODEL NO. 3410 or 4210 Fire-insulated File Room Door should be specified for File Rooms rated as 1/2 to 1 hour fire risks.

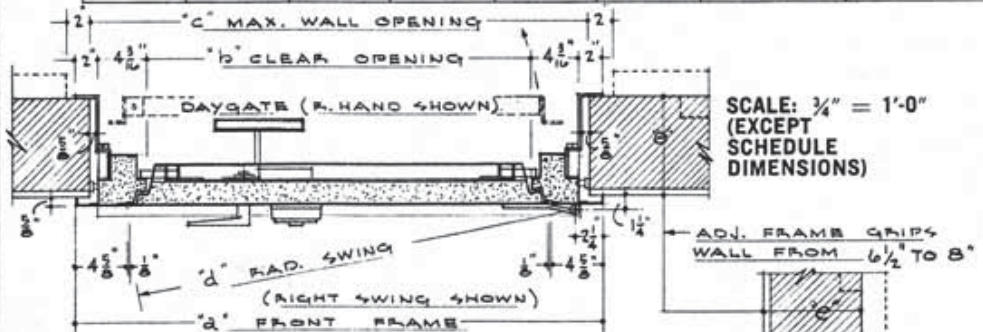
### ARCHITECTS' SUGGESTED SPECIFICATIONS

"The contractor shall furnish and/or install H-H-M Model 3410 or 4210 (1 Hour) (right or left swing), flatsill Fire-insulated File Room Door(s) bearing the (1 hour) label of the Underwriters' Laboratories, Inc., and the Underwriters' Laboratories, Inc. listed Relocking Device label for relocking device designed to deadlock the door when the lock is under mechanical, explosive or torch attack. The door shall have a clear opening of 79 1/16" high by 42 1/8" wide for models 4210; and 79 1/16" high by 34 1/8" wide for models 3410. The entrance of the door is flush with the finished floor level. Door and frame shall be filled with MONOLITE, a fire resistive insulation. The door shall be 3 1/8" thick on edge locked by 10, 3/4" diameter bolts checked by 3 tumbler, key changing combination locks. The door shall be provided with a panic release bar for emergency escape. Doors are equipped with 3 offset roller bearing hinges. The door shall be erected according to the manufacturers' installation instructions." Finish is Textured Gray.

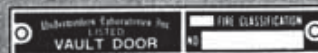
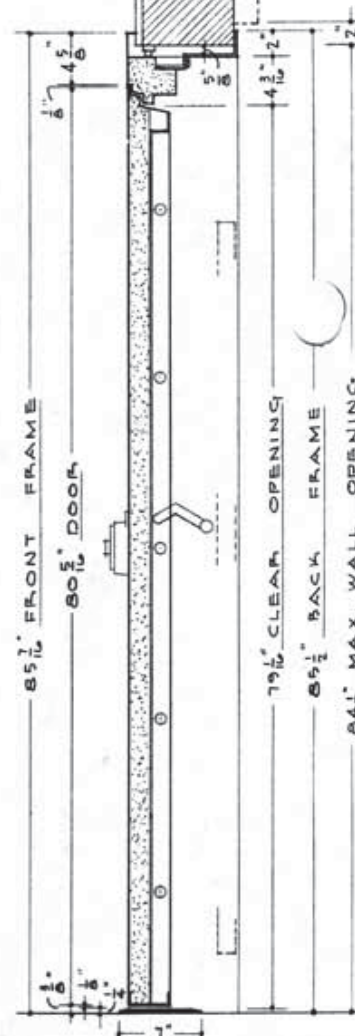
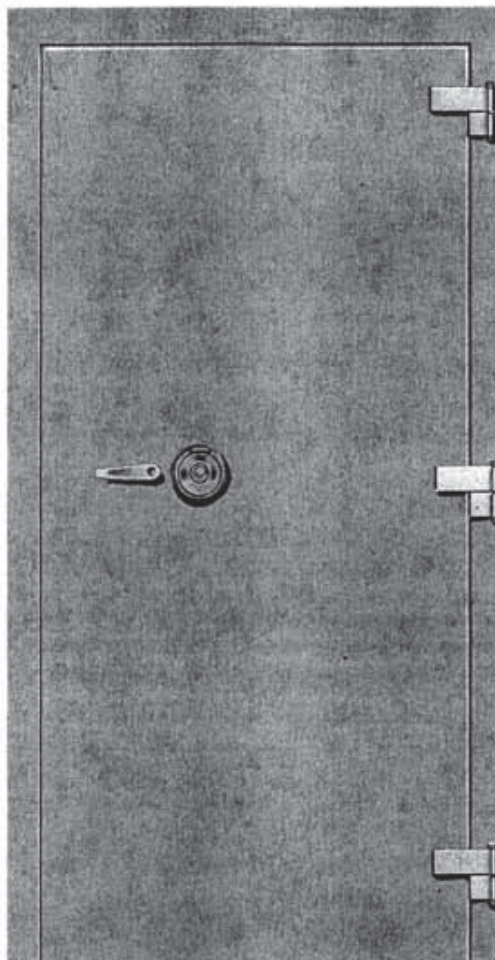
# H-H-M INSULATED VAULT DOORS

• SCHEDULE •

MODEL	CLASS	"a"	"b"	"c"	"d"	"e"	APP. 4 HP G. WT.
3410	1 HR.	46 3/8"	34 1/8"	44"	39 3/8"	6 1/2" TO 8"	560
4210	1 HR.	54 3/8"	42 1/8"	52"	47 3/8"	6 1/2" TO 8"	770



SCALE: 3/4" = 1'-0"  
(EXCEPT  
SCHEDULE  
DIMENSIONS)



**HERRING - HALL - MARVIN VAULT DOORS**

ALL OVER THE WORLD IT'S A SAFE NAME