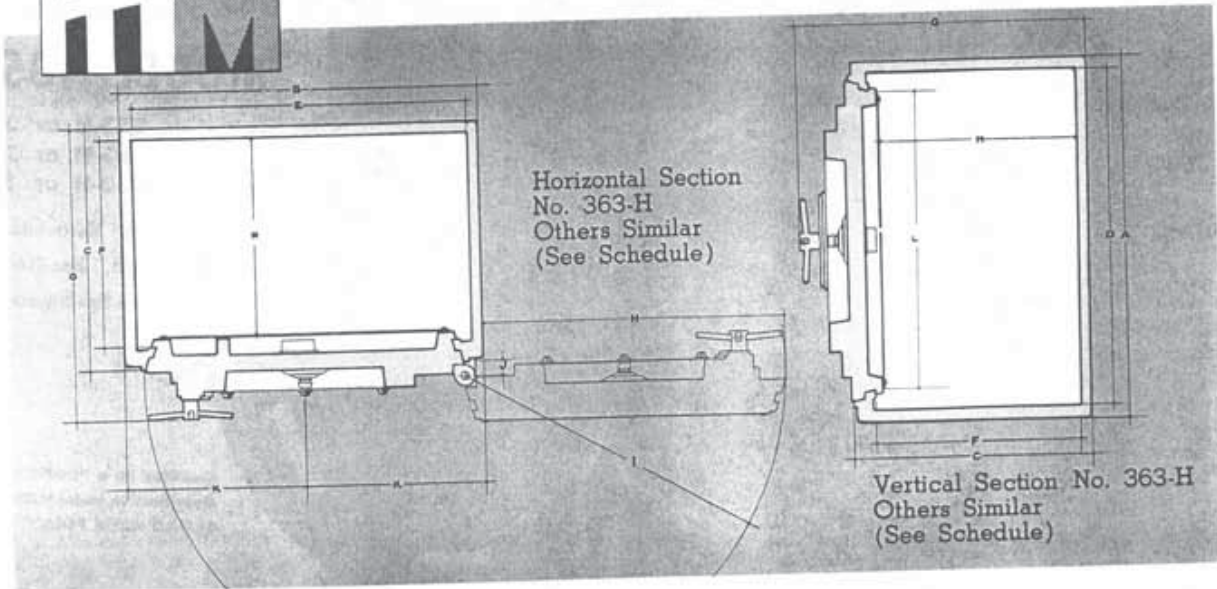




MONEY CHESTS

NOS. 233 - 283 - 363 - (H or NH)



SPECIFICATIONS

(See Drawings and Schedule.)

INSURANCE RATES — Class "E" Mercantile Safe Burglary; Class "H" Bank Burglary. Underwriters' Laboratories' labeled Relocking Device earns an additional 10% discount.

CONSTRUCTION — SAE-1020 solid steel; door 1½" thick; body 1" thick. Lug-type round door, fitted to not more than .004" clearance, revolves to seat its lugs behind body lugs. An automatic Double Check Feature, activated by two plunger buttons on the door, locks open door in true position for closing without danger of damaging lugs or locking bolt.

LOCKING MECHANISM — Three-tumbler, key-changing, combination lock; and an Underwriters' Laboratories' labeled Relocking Device. All "NH" (Non-Hardened) Models have locking bolt protected by drill-resistive inserts in the body jamb, and combination lock protected by drill-resistive plate.

STANDARD FINISH — H-H-M Gray.

OPTIONAL SPECIFICATIONS

(See How to Order.)

ENCASED CHESTS — All "NH" Chests may be ordered "ENCASED" in a steel-clad, reinforced concrete block.

HARDENED CHESTS — All Chests may be ordered hardened by the Harveyizing process to make them drill-resistive. A Brinell Hardness Test Certificate is furnished with each Chest ordered hardened.

INSIDE DOORS — Inner partitions with round, 2-key locked doors can be added to all Models to provide holdup protection for incoming cash. See catalog for H-H-M Inner Door Money Chests.

FINISH — Flat colors, H-H-M or special grained walnut, oak or mahogany.

MISCELLANEOUS — Anchoring angles welded to Chest body. Anchoring in Record Safe at factory. Removable, key-locking dial. Removable dial.

HOW TO ORDER

Always use suffix letters following Model Nos. . . . "H," Hardened Chests . . . "NH," Non-Hardened Chests . . . "ENCASED," encased Chests . . . "ID," Chests with inside doors. Example: "No. 233-NH-ENCASED." Specify all other options.

The Herring-Hall-Marvin Safe Company reserves the right to make substitution of materials without notice, when necessary to comply with Government Regulations.

| MODEL NOS. | "H" AND "NH" NON-ENCASED CHESTS | | | | | | | | | | | | | "NH" ENCASED CHESTS ONLY | | | | | | |
|-----------------|---------------------------------|------|------|---------------------|------------------------|--------|------|------|-------------|--------|-------------------------|-------------------|----------------------|--------------------------|------------------|---------------------|---------|---------------------|------|---------------------|
| | Outside | | | | | Inside | | | | | Dia. Clear Door Opening | To Center of Door | Door Swing | | Capacity Cu. In. | Shp'g Weight Pounds | Outside | | | Shp'g Weight Pounds |
| | Body | | | Deep Overall Closed | Add to Width Door 180° | Body | | | Clear Depth | Radius | | | Add to Radius at 90° | Body | | | | | | |
| | High | Wide | Deep | | | High | Wide | Deep | | | High | Wide | | Deep | High | Wide | Deep | Deep Overall Closed | | |
| A | B | C | G | H | D | E | F | M | L | K | I | J | | | | | | | | |
| 233-H 233-NH | 24" | 24" | 24" | 28" | 21¾" | 22" | 22" | 21¾" | 19⅞" | 18" | 12" | 22¾" | 1½" | 10,198 | 1,230 | 42" | 33" | 30" | 34¾" | 3,630 |
| 283-H 283-NH | 28" | 28" | 24" | 28" | 19¾" | 26" | 26" | 21¾" | 19⅞" | 20" | 14" | 22¾" | 1½" | 13,781 | 1,625 | 50" | 41" | 30" | 34¾" | 4,880 |
| 363-H 363-NH | 36" | 36" | 24" | 29½" | 30½" | 34" | 34" | 20¾" | 19⅞" | 30" | 18" | 32" | 1½" | 23,425 | 2,200 | 54" | 45" | 30" | 38" | 6,343 |



Herring-Hall-Marvin Safe Co.

Hamilton, Ohio

NEW YORK • CHICAGO • BOSTON • DETROIT • SAN FRANCISCO • ST. LOUIS
HOUSTON • PHILADELPHIA • MINNEAPOLIS • WASHINGTON • ATLANTA
OTHER AGENCIES ALL OVER THE WORLD